

**ONTARIO  
SUPERIOR COURT OF JUSTICE**

BETWEEN:

**CANWEST MEDIAWORKS INC.**

Applicant

and

**ATTORNEY GENERAL OF CANADA**

Respondent

**AFFIDAVIT OF KATHY GARDNER**

I, Kathy Gardner, of the City of Toronto in the Province of Ontario, make oath and say as follows:

1. I am Senior Vice President, Integrated Media Research and Corporate Promotions, with CanWest MediaWorks Inc. (the Applicant and hereinafter referred to as "CanWest") and as such have knowledge of the matters contained in this affidavit. Where such matters are stated to be based on information and belief, I have identified the source of the information and verily believe the same to be true.

2. I joined CanWest in 2002 as Vice President, Integrated Media Research, and was promoted to my present position in 2004. Prior to joining CanWest, I held various positions with Bates Canada, a prominent advertising agency, rising eventually to Executive Vice President, Director of Media Operations. In December, 2006 I was appointed the first female Chair of the Board of Directors of the Bureau of Broadcast

Measurement ("BBM"). I have also served as Chair of the BBM's Television Executive Committee, Chair of the Television Bureau Research Committee, President of the Broadcast Research Council, and as a member of the Canadian Media Directors Council. In these positions, I have had many years' experience in media research.

3. At CanWest, I am responsible for integrated media research, which includes monitoring of market share and market penetration of various media in the Canadian marketplace. This is a crucial function for a media company like CanWest. For this reason, we devote significant resources to our research capabilities. We have a group of approximately 15 full-time employees devoted to television research, a group of approximately 8 full-time employees devoted to print media research, and two full-time employees devoted to internet research. All of these groups report to me.

4. The purpose of this affidavit is to illustrate the extent to which Canadians are currently exposed to direct-to-consumer advertising ("DTCA") of prescription drugs via U.S. media advertising in Canada.

5. Exposure of Canadians to DTCA of prescription drugs from U.S. sources occurs in at least three media: television advertising, print advertising, and the internet. To some extent, exposure in these media is affected by their regulatory environment, as explained below.

## Television Advertising

6. DTCA of prescription drugs is a regular feature of television advertising in the United States. U.S. television networks can be divided into two categories: conventional networks (e.g., CBS, NBC, ABC, Fox) and “specialty” networks (e.g., CNN, A&E, BET). DTCA appears in television programs broadcast on both kinds of networks.

7. I am not able to provide precise data on the number of Canadian viewers who have seen specific DTC advertisements. However, the data set out below show that a very large percentage of Canadians are likely exposed to DTCA via U.S. television advertising.

8. The vast majority of Canadian households subscribe to cable television or satellite television. A small number (10% of adults) still receive television via an “off-air” signal.

9. **U.S. conventional stations** are offered as part of the basic package by most broadcast distribution undertakings (cable and satellite companies, or “BDU”s), and are available off-air in border areas. According to BBM data from Fall, 2006, attached as Exhibit “A” to my affidavit, the breakdown is as follows:

- A) 40.9 % of Canadian adults have **‘analog’** cable reception. US conventional stations achieve a 12.7% share of viewing and reach 96.1% of this population.
- B) 25.2 % of Canadian adults have **‘digital’** cable reception. US conventional stations achieve a 11.9% share of viewing and reach 88.1% of this population.

C) 23.8 % of Canadian adults have 'satellite' reception. US conventional stations achieve a 6.4% share of viewing and reach 81% of this population.

D) 10% of Canadian adults receive television via an 'off-air' signal. US conventional stations from border markets achieve a 9.6% share of viewing and reach 33.8 % of this population.

10. Cumulatively, US conventional stations reach 84.1% of Canadian adults and achieve a 10.7% share of viewing. In comparison, Canadian English conventional stations reach 94.7% of Canadian adults and achieve a 30.3% share of viewing.

11. **US specialty stations** are offered in various options for the package of channels to be included in their subscription by their BDUs.

A) Of the 40.9 % of Canadian adults who have 'analog' cable reception, U.S. specialty stations achieve a 8.8% share of viewing and reach 81.4 % of this population.

B) Of the 25.2 % of Canadian adults who have 'digital' cable reception, U.S. specialty stations achieve a 9.0% share of viewing and reach 83.3 % of this population.

C) Of the 23.8 % of Canadian adults who have 'satellite' reception, U.S. specialty stations achieve a 7.2% share of viewing and reach 72.6 % of this population.

12. Cumulatively, US specialty stations reach 71.4% of Canadian adults and achieve a 7.9% share of viewing. In comparison, Canadian English specialty stations reach

83.8% of Canadian adults and achieve a 23.0% share of viewing. (Note that specialty stations, which are referred to as “cable stations” in the U.S., are not available off-air in either country.)

13. All together, these figures indicate that the number of adult Canadians who view U.S. TV stations likely approaches or even exceeds 90% (assuming that some Canadians watch U.S. conventional stations but not specialty stations, and vice versa). While these figures indicate that on the whole, Canadians spend more time watching Canadian TV stations than U.S. TV stations, the vast majority of Canadians view U.S. TV stations at least occasionally. Generally, the combined market share of U.S. conventional and specialty stations approaches 20%.

14. In some circumstances, television programs from U.S. conventional stations distributed to Canadians via cable or satellite feature “simulcast” programming. This occurs when a Canadian station airs the same episode of a program as the U.S. station at the same time. As required by regulations under the *Broadcasting Act*, the BDU (cable or satellite company) replaces the U.S. signal with a Canadian signal, including Canadian commercials. For example, the Fox network in the U.S. might have the same episode of the same program scheduled at the same time as Global in Canada. In this example, the BDU’s would be required to replace the Fox signal with the Global signal, even for viewers who watch the program on the Fox channel. Where this occurs, the U.S. DTC advertisements that are seen by U.S. Fox viewers would be replaced by Canadian-sourced advertisements run on Global. (This practice does not of course affect viewers of “off-air” signals.)

15. However, for many reasons, some of which are detailed below, this practice is far from universal and is becoming less common. The data presented above have been adjusted to exclude simulcast programming. In other words, the data reflect the post-simulcast reach of U.S. TV stations to Canadian adults; i.e. it is likely that the number of adult Canadians who view programs on U.S. TV stations in their original form, complete with U.S. DTC advertisements, approaches or even exceeds 90%.

16. For example, under the *Broadcasting Act* regulations, cable companies with fewer than 2,000 subscribers are not required to simulcast at all. Even for larger BDUs, simulcasting can only occur when specific conditions are met. A Canadian conventional television station must offer the same episode of the same program, airing at the same time, with a signal quality at least as good as the U.S. signal, and four days' notice must be given to the BDU. These conditions are increasingly difficult to meet in a world of hundreds of channels and high-definition television. Even when the conditions are met, use of simulcast is not guaranteed. For these reasons, simulcast programming represents the exception, not the rule.

17. Another issue is that one of the two licensed satellite BDUs, Star Choice (which represents approximately one third of the satellite market) has a policy of using simulcasts only within a 50 mile radius of the studios of the Canadian TV station whose signal is simulcast. Thus, for example, Global Television provides a signal for simulcasts to Star Choice from its Don Mills studio, which Star Choice broadcasts to its customers within a 50 mile radius of Don Mills. However, Global Television has no

studio in Ottawa, Sudbury, or Windsor, so Star Choice customers in these locations receive broadcast signals from U.S. stations even though simulcast of the Global signal would be possible. (This is an issue that CanWest has raised with the CRTC, but it remains the case at present that a great many Star Choice customers are viewing U.S. conventional station signals rather than available Canadian simulcast signals.)

18. For U.S. specialty stations, simulcasting of Canadian signals does not appear to be contemplated by the regulations, and is basically nonexistent. There is some incidental replacement of U.S. advertisements by a practice known as “cutting in”, but this is not done systematically. BDUs carrying U.S. specialty stations are permitted to “cut in” to U.S. advertisements for up to 2 minutes per hour, for example to promote upcoming programs, but this is not done in such a manner as to screen out any particular kind of advertising. In fact, the U.S. specialty stations do not provide any advance notice to the BDUs of the advertisements they are going to run, so the replacement of U.S. advertising happens on a random basis. Thus, Canadians are basically exposed to the same advertising on U.S. specialty stations as U.S. viewers are. For example, I have personally seen examples of DTCA of prescription drugs on CNN. (As set out below, DTCA is heavily featured on CNN, which runs these advertisements at a rate of close to 30 a day.)

19. In the affidavit of Arturo Duran, sworn December 22, 2005, four examples were provided of DTCA broadcast on U.S. television stations that were viewed in Canada. I am advised by Mr. Duran that the specific stations on which these advertisements were shown were CNN (U.S. specialty), ABC (U.S. conventional) and NBC (U.S.

conventional). To give some general idea of who might have seen these advertisements, according to Fall, 2006 BBM data, attached to this affidavit as Exhibit "B", the percentages of Canadian adults reached by these stations, and the total number of Canadian adult viewers of these stations, are set out in the following chart:

TV Station	Percentage of Can. adults reached	No. of Can. adult viewers
CNN	46.9%	12,056,000
ABC	69.2%	17,772,000
NBC	68.5%	17,595,000

20. Some more systematic data can be obtained from analyzing advertising logs of U.S. TV stations. For example, in the Toronto area, BDUs distribute signals from U.S. conventional stations broadcasting in Buffalo, N.Y. (U.S. specialty networks are national – they do not have local stations.) Advertising logs for WGRZ (NBC), WKBW (ABC), and WUTV (Fox) for the month of November, 2006 show that these stations broadcast 17, 28 and 7 DTC advertisements respectively during that month. Advertising logs for CNN and A&E for the month of November, 2006 show that these stations broadcast 859 and 615 DTC advertisements respectively during that month. The advertising logs for these stations for November, 2006 are attached as Exhibit "C".

21. The month of November, 2006 was chosen because it is a recent month for which advertising logs are available, and because it can be cross-referenced to contemporaneous BBM data from Fall, 2006 to obtain an estimate of the number of viewers of these advertisements in the Toronto area. I am not aware of any reason why



this month would be different from any other month, so I would assume that it is representative. Cross-referencing the data as described above indicates that for that single month, 49% of adult television viewers in the Toronto area were exposed to the DTC advertisements listed in the advertising logs, and that those who viewed them saw an average of 11 advertisements. (These numbers could possibly be affected by the practice of “cutting in” on the specialty stations, which has not been factored into the analysis, but I would not expect it to have much effect because it is not done systematically.) A spreadsheet setting out this analysis is attached as Exhibit “D”.

22. If this data is extrapolated across the whole country, and over longer periods of time, it is likely that the vast majority of Canadian TV viewers are regularly and repeatedly exposed to U.S. DTCA, despite Canada’s legislative prohibition.

### **U.S. Magazine Advertising**

23. There are two types of U.S. magazines published in Canada. First, there are so-called “split run” magazines, where different versions of the same magazine are published and distributed in the U.S. and Canadian markets. For example, *Sports Illustrated* is distributed in the U.S. and *Sports Illustrated Canada* is distributed in Canada. Split run magazines provide an opportunity for different advertisements to be run in the U.S. and Canadian versions, but they may still feature advertisements aimed at the U.S. market. Second, there are U.S. magazines that are simply sold in Canada as published in the U.S., complete with all of their original advertisements.

24. There are legal restrictions on U.S. split run magazines. These magazines have historically been opposed by the Canadian magazine industry as having an unfair advantage in competing for Canadian advertising revenue. U.S. magazines serve a much larger market, and have lower unit costs. If they were permitted to create "Canadian" editions, identical to the U.S. version except for the substitution of Canadian advertisements, it is feared that they would be able to undercut Canadian magazines in selling space to Canadian advertisers, because the marginal costs of producing a Canadian edition of a magazine whose costs have already been largely recouped in the U.S. market are likely to be much lower than the costs of a Canadian publisher producing a magazine from scratch. For this reason, the Canadian government has imposed various restrictions on magazines of this kind.

25. In the late 1990s, the U.S. complained successfully to the World Trade Organization about the restrictions on split run magazines that were then in force. This led to the enactment of Bill C-55, a negotiated compromise with the U.S. which allows split run magazines, but requires them to have a minimum level of Canadian content. Attached as Exhibit "E" is a copy of a document prepared by the Parliamentary Information and Research Service of the Library of Parliament dated 12 October 1999, giving the background to this issue.

26. The majority of U.S. magazines sold in Canada are not split run. Rather, they are published in the United States and sold in Canada purely as U.S. publications, complete with whatever advertisements were included for the U.S. market. U.S. magazines account for the vast majority of the 59% of the Canadian market share held

by non-Canadian magazines. According to a May, 2005 submission by the Canadian Magazine Publishers Association to the House of Commons *Standing Committee on Transport and Communications*, U.S. magazines account for 95% of magazines sold on Canadian news stands.<sup>1</sup> As reported by the Audit Bureau of Circulations in 2006, there are almost 600 U.S.-published magazines available for sale in Canada. Attached as Exhibit “F” to this Affidavit is a copy of a list of such magazines, and their circulation in 2004 and 2005.

27. In the affidavit of Arturo Duran, sworn December 22, 2005, some examples were provided of DTCA in U.S.-published magazines available for sale in Canada. The four specific magazines from which the advertisements were drawn, and their estimated readership in Canada, are as follows<sup>2</sup>:

Magazine	Estimated Readership
Men’s Health	570,000
People Magazine	3,150,000
Prevention Magazine	1,150,000
Star Magazine	935,000

28. Of these magazines, *Men’s Health*, *Prevention Magazine*, and *Star Magazine* are U.S. magazines sold in the same form as in the U.S. *People Magazine* has both a U.S. edition and a “split run” Canadian edition. However, the Canadian edition of *People Magazine* does not replace all of its U.S. advertisements with Canadian advertisements.

<sup>1</sup> Canadian Magazine Publishers Association, *Submission to the Standing Committee on Transport and Communications*, May 2005, p. 3, 6.

<sup>2</sup> The estimates for *Men’s Health*, *Prevention Magazine*, and *Star Magazine* are based upon reported circulation of U.S. magazines for the second half of 2006, relative to adjusted readers-per-copy figures of Canadian magazines that are similar in content. For *People Magazine*, which is a “split run” magazine, the estimate is based on data from the Print Measurement Bureau 2007 study.

Rather, it reserves up to 25% of its advertising space for Canadian advertisers, and gives priority placement (e.g. the centre and back cover) to Canadian advertisements. In the rest of the magazine, U.S. advertisements appear, including regular examples of DTCA of prescription drugs. I have personally seen examples of DTCA in copies of *People Magazine* purchased in Toronto.

29. There is not as much information publicly available on the nature, frequency and readership of magazine advertisements as there is for television advertising. However, some monitoring is done by TNS Media Intelligence. We have extracted data on the number of DTC ads for the four magazines from which the examples in Arturo Duran's affidavit were drawn for the most recent quarter reported, i.e. January to March, 2007. Attached as Exhibit "G" to this affidavit is a table setting out the data on the average number of pages per issue devoted to DTC ads for each of these four magazines, compiled by TNS Media Intelligence. This table reflects the U.S. edition of *People Magazine*.

30. To confirm that this data is representative of the exposure of Canadians to DTCA in U.S. magazines, we have also manually surveyed copies of the four magazines, as available in magazine stores and newsstands in Toronto during the month of May, 2007, to create our own "advertising log" for these publications, which is attached as Exhibit "H". (The ads were reviewed by counsel, to confirm that they are "product claim" ads that contravene Canada's laws.) Again, I am not aware of anything unusual about this particular month, which was chosen purely on the basis that it is the most recent month before this affidavit is sworn. I would therefore assume that it is representative.

Both *Prevention* and *Men's Health* are monthly publications, so one issue of each of these was reviewed. *People Magazine* and *Star Magazine* are weekly publications, so four issues of each of these were reviewed. Cumulatively, these publications contained 28 DTC advertisements comprising 86 pages, for an average of 2.8 per issue, and an average of 8.6 pages of DTC advertising per issue. These numbers are consistent with those reported by TNS Media Intelligence. Specifically, there does not appear to be any significant difference in the data on *People Magazine*, even though the issues sold in Toronto are presumably the Canadian edition.

31. Considering that these are results for only four magazines for a single month, it is likely that millions of Canadians are regularly and repeatedly exposed to U.S. DTCA in this form.

### **Internet Advertising**

32. DTCA of prescription drugs is also readily accessible to Canadians via the internet.

33. At paragraph 63 of the affidavit of Joel Lexchin, sworn June 30, 2006, Professor Lexchin reproduces a chart of the top 20 prescription drugs advertised in the United States in 2004, by advertising expenditure.

34. Each of these products has a dedicated website that is readily accessible to any Canadian with internet access. Attached as Exhibit "I" to my affidavit are copies of the websites for each of these prescription drugs, accessed in April, 2007 by conducting a

Google search on the brand name of the drug. In every case, the site accessed was the first listed site that came up on the Google search.

35. DTCA of prescription drugs on the internet also takes more active forms. For example, I am advised by counsel that an advertisement for the anti-depressant Cymbalta was featured on msn.com on April 24, 2007. The advertisement stated: "Depression hurts. But you don't have to. Learn why at Cymbalta.com.", with a link to the cymbalta.com website. Attached as Exhibit "J" to my affidavit is a copy of the DTC advertisement as it appeared on the cymbalta.com website on April 24, 2007.

36. Many Canadians were likely exposed to this advertisement through msn.com, which is a popular home page, in part because Microsoft's internet explorer is designed to set msn.com as the "default" home page (for those whose language preference is "English – U.S.A") when users do not override this choice. (Microsoft does not have a language category for "English – Canada".) According to comScore Media Metrix data, msn.com is the website domain most visited by Canadians – of a total "online universe" of 22.8 million Canadians (representing 72% of Canadians over the age of 2), msn.com was visited by 19.7 million, or 86%. (Eight of the top ten and fifteen of the top twenty sites visited by Canadians are U.S. sites.) Attached as Exhibit "K" is a copy of a spreadsheet setting out this information.

37. According to Evaliant Services, an agency which monitors advertising on the internet, the same or a similar advertisement for cymbalta was run on Yahoo! Canada Sports.com on June 18, 2006. Other examples on this specifically Canadian website

include Enablex (for overactive bladder) on Yahoo! Canada Sports.com on June 30, 2006, and Arimidex (for early breast cancer) on Yahoo! Canada Sports.com on July 9, 2006. An advertisement for Singulair (for allergies) ran on cnn.com Canada, another popular website, in April, 2007. Attached as Exhibit "L" are copies of these advertisements, as reported by Evaliant Services.

38. Evaliant Services compiles numerical data on the frequency and brands of prescription drug advertisements on the internet. Attached as Exhibit "M" is a report from Evaliant Services listing more than 22,000 such advertisements, categorized by brand, between January 2006 and April 2007. (This service has picked up some information besides DTC ads for prescription drugs – for example, the ads for McNeil Consumer Healthcare appear to be for over-the-counter drugs. The listed drugs are not necessarily all "Schedule F" prescription drugs that cannot legally be advertised in Canada. Nevertheless, there were likely thousands of internet ads for prescription drugs that contravene Canada's laws during the period surveyed.)

39. In a 2006 study done of internet use by Americans, the authors found that 80% of internet users go online for health information. Of these internet users, 37% have specifically sought information on prescription or over-the-counter drugs. Two thirds of internet users who search online for health information start their inquiry at a search engine. Attached as Exhibit "N" to my affidavit is a copy of a report entitled "Pew Internet & American Life Project: Online Health Search 2006".

40. Information on use of the internet by Canadians is comparable, though not quite as specific. According to the June 2006 CyberTRENDS report by ComQUEST Research, 71% of female adult respondents and 44% of male adult respondents reported going on line to search for "health and wellness" information. This was the top category for female respondents. Attached as Exhibit "O" is a copy of the June 2006 CyberTRENDS report. According to an October 2005 report by the Canadian Internet Project, internet users reported spending an average of 59 minutes per week on line "reading or searching for medical information". Attached as Exhibit "P" is a copy of the October 2005 Canadian Internet Project report.

41. There is also some specific information available on visits by Canadians to pharmaceutical company websites that include DTC ads, including [viagra.com](http://viagra.com), [ambienr.com](http://ambienr.com), [cymbalta.com](http://cymbalta.com), [merck.com](http://merck.com) and Sanofi-Aventis. The first three of these are specific U.S. DTCA sites, while the latter two are general pharmaceutical company websites with links to specific DTCA sites for pharmaceuticals that they produce. This information, compiled from comScore Media Metrix reports, is set out in a spreadsheet attached as Exhibit "Q". It shows that during the month of March, 2007 alone, there were approximately 200,000 Canadian visitors to these websites collectively, including 22,000 unique visitors to [viagra.com](http://viagra.com), 6,000 to [ambienr.com](http://ambienr.com), and 20,000 to [cymbalta.com](http://cymbalta.com). (The methodology used by comScore Media Metrix tends to under-report visitors to niche sites, so the actual numbers may well be higher.) Interestingly, in April, 2007 (the same month as the [cymbalta](http://cymbalta.com) advertisement on [msn.com](http://msn.com)) the number of Canadian unique visitors to [cymbalta.com](http://cymbalta.com) jumped to 40,000 from 20,000 the previous month.



42. From the information above, it is likely that large numbers of Canadians are repeatedly and regularly exposed to DTCA via advertising on U.S. websites.

### **Reported Exposure to DTCA by Canadians**

43. At Exhibit 4 to Professor Lexchin's affidavit, he attaches a study by Mintzes et al., entitled "How Does Direct to Consumer Advertising (DTCA) affect prescribing? A Survey in Primary Care Environments With and Without Legal DTCA", published in the Canadian Medical Association Journal in 2003. This study, which compares patients in Vancouver and Sacramento, noted that 87.4% of Vancouver patients reported seeing at least one DTC advertisement within the last year and 30% reported seeing advertisements for more than 10 products. The study noted that "Canadians see advertisements in U.S. magazines and on U.S. cable television, as well as an increasing volume domestically generated DTCA of questionable legality".<sup>3</sup>

### **Conclusion**

44. From the data set out above, it is not possible to give a precise number of Canadians exposed to DTCA of prescription drugs via U.S. media. However, the presence of U.S. media in Canada is pervasive. From the data set out above, it appears likely that the overwhelming majority of Canadians are already exposed repeatedly and regularly to DTCA from U.S. sources via television, magazines, and the

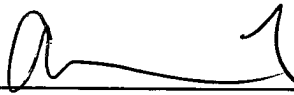
---


<sup>3</sup> Mintzes et al., "How Does Direct to Consumer Advertising (DTCA) affect prescribing? A Survey in Primary Care Environments With and Without Legal DTCA", *Can. Med. Assoc. J.* 2003; 169:405-12.

internet, despite the prohibition on DTCA in Canada's *Food and Drugs Act* and *Food and Drug Regulations*.

45. I make this affidavit in support of CanWest's application and for no other or improper purpose.

SWORN before me in the City of Toronto,  
in the Province of Ontario this 14th  
day of June, 2007.

  
A Commissioner, etc.  
ANDREW LOKAN

  
Kathy Gardner

This is **Exhibit A** referred to in the Affidavit of **Kathy Gardner** sworn before me this 4<sup>th</sup> day of June, 2007.

A handwritten signature in black ink, consisting of a stylized 'M' followed by a long horizontal stroke and a small loop at the end.

---

A Commissioner, etc.

REPORT (Monday to Sunday|Summary)

		Areas >>	Total Canada					
		Dates >>	Fall 2006					
Dayparts	Stations	Audiences	AMA(000)	Shr%	CumRch(000)	CumRch%	Univ(000)	Universe%
M-Su 6a-6a	Total TV	A18+	4585.6	100	25595	99.6	25663	100
		A18+ Off-Air	294.9	100	2646	98.9	2577	10
		A18+ Digital Cable	1308.1	100	6184	99.4	6475	25.2
		A18+ Analog Cable	1867.5	100	10692	99.8	10501	40.9
		A18+ Satellite	1115.1	100	6073	99.9	6110	23.8
	US Conventional	A18+	491.3	10.7	21600	84.1	25663	100
		A18+ Off-Air	28.2	9.6	906	33.8	2577	10
		A18+ Digital Cable	155	11.9	5480	88.1	6475	25.2
		A18+ Analog Cable	237.1	12.7	10292	96.1	10501	40.9
		A18+ Satellite	70.9	6.4	4923	81	6110	23.8
	US Specialty	A18+	362.4	7.9	18342	71.4	25663	100
		A18+ Off-Air	0	0	27	1	2577	10
		A18+ Digital Cable	117.7	9	5183	83.3	6475	25.2
		A18+ Analog Cable	164.5	8.8	8716	81.4	10501	40.9
		A18+ Satellite	80.2	7.2	4416	72.6	6110	23.8

Fall 2006: September 11 to December 17, 2006

Source: BBM-NMR Meter data

[TECHNICAL CARD]

BBM Analytics - Sofres Audiencia de Medios, S.A.  
Dates Analysis

Reach Condition: 1 min.  
Reference Station: Total TV

Time zones:Station time

Days Monday to Sunday  
Activity Summary

	Total Canada	
	Univ(000)	Sample
A18+	25660	4007
A18+ Off-Air	2668	289
A18+ Digital Cable	6525	1057
A18+ Analog Cable	10307	1929
A18+ Satellite	6160	732

[REPORT] (Monday to Sunday|Summary)

		Audiences >>	A18+					
		Dates >>	Fall 2006					
Areas	Dayparts	Stations	AMA(000)	Shr%	CumRch(000)	CumRch%	Univ(000)	Universe%
Total Canada	M-Su 6a-6a	Can. Conventional Eng.	1388.6	30.3	24324	94.7	25663	100
		Can. Specialty Eng.	1053.8	23	21537	83.8	25663	100
		US Conventional	491.3	10.7	21600	84.1	25663	100
		US Specialty	362.4	7.9	18342	71.4	25663	100

Fall 2006: September 11 to December 17, 2006

Source: BBM-NMR Meter data

[TECHNICAL CARD]


BBM Analytics - Sofres Audiencia de Medios, S.A.  
Dates Analysis

Reach Condition: 1 min.  
Reference Station: Total TV

Time zones: Station time  
Days Monday to Sunday  
Activity Summary

	Total Canada	
	Univ(000)	Sample
A18+	25660	4007

This is **Exhibit B** referred to in the Affidavit of **Kathy Gardner** sworn before me this 4<sup>th</sup> day of June, 2007.

A handwritten signature in black ink, consisting of a series of loops and a long horizontal stroke.

---

A Commissioner, etc.



[REPORT] (Monday to Sunday|Summary)

		Audiences >>	A18+					
		Dates >>	Fall 2006					
Areas	Dayparts	Stations	AMA(000)	Shr%	CumRch(000)	CumRch%	Univ(000)	Universe%
Total Canada	M-Su 6a-6a	CBC National	171.8	3.7	22330	86.9	25663	100
		CTV National	484.5	10.6	22474	87.5	25663	100
		Global National	310.6	6.8	22140	86.2	25663	100
		CNN	54.7	1.2	12056	46.9	25663	100
		US_ABC	73.4	1.6	17782	69.2	25663	100
		US_NBC	73.6	1.6	17595	68.5	25663	100
		CTV Newsnet	21.6	0.5	8667	33.7	25663	100
		Newsworld	42.6	0.9	13817	53.8	25663	100

Fall 2006: September 11 to December 17, 2006

Source: BBM-NMR Meter data

[TECHNICAL CARD]

BBM Analytics - Sofres Audiencia de Medios, S.A.  
Dates Analysis

Reach Condition: 1 min.  
Reference Station: Total TV

Time zones:Station time  
Days       Monday to Sunday  
Activity     Summary

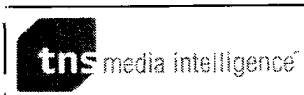
	Total Canada	
	Univ(000)	Sample
A18+	25660	4007

This is **Exhibit C** referred to in the Affidavit of **Kathy Gardner** sworn before me this 4<sup>th</sup> day of June, 2007.

A handwritten signature in black ink, consisting of a stylized 'M' followed by a horizontal line and a small flourish.

---

A Commissioner, etc.



**Select Buffalo Station Logs**  
**November 2006**  
**Prescription Medications (Category D560)**

PROPERTY	DOW	DATE	TIME	POD POS	POD SZ	LEN	ACCOUNT	PROGRAM	PROG TYPE
WGRZ	FRI	NOV 03 2006	01:58:56pm	3	3	60	ZELNORM IBS RX (D560)	DAYS OF OUR LIVES	SOAP OPERA
WGRZ	FRI	NOV 03 2006	08:40:28pm	6	8	60	ZELNORM IBS RX (D560)	1 VS 100	GAME SHOW
WGRZ	WED	NOV 08 2006	05:43:42pm	3	5	60	ZETIA CHOLESTEROL RX (D560)	NEWS	NEWSCAST-LOCAL
WGRZ	THU	NOV 09 2006	05:22:30pm	5	12	60	ZETIA CHOLESTEROL RX (D560)	NEWS	NEWSCAST-LOCAL
WGRZ	THU	NOV 09 2006	05:25:53pm	8	12	60	ZETIA CHOLESTEROL RX (D560)	NEWS	NEWSCAST-LOCAL
WGRZ	FRI	NOV 10 2006	05:11:29pm	2	6	60	ZETIA CHOLESTEROL RX (D560)	NEWS	NEWSCAST-LOCAL
WGRZ	FRI	NOV 10 2006	05:51:48pm	5	5	60	ZETIA CHOLESTEROL RX (D560)	NEWS	NEWSCAST-LOCAL
WGRZ	MON	NOV 13 2006	05:42:12pm	9	13	30	NASONEX ALLERGY RX (D560)	NEWS	NEWSCAST-LOCAL
WGRZ	TUE	NOV 14 2006	05:04:29pm	1	1	10	LUNESTA SLEEP RX (D560)	NEWS	NEWSCAST-LOCAL
WGRZ	THU	NOV 16 2006	05:23:48pm	5	12	60	VYTORIN CHOLESTEROL RX (D560)	NEWS	NEWSCAST-LOCAL
WGRZ	SAT	NOV 18 2006	06:26:05pm	3	7	60	COREG HEART RX (D560)	NEWS	NEWSCAST-LOCAL
WGRZ	SAT	NOV 25 2006	06:28:29pm	5	6	60	COREG HEART RX (D560)	NEWS	NEWSCAST-LOCAL
WGRZ	SUN	NOV 26 2006	06:25:59pm	4	6	60	CADUET RX (D560)	NEWS	NEWSCAST-LOCAL
WGRZ	MON	NOV 27 2006	10:32:47am	4	4	60	IMITREX MIGRAINE RX (D560)	RACHAEL RAY	TALK
WGRZ	MON	NOV 27 2006	03:39:59pm	3	4	60	FOSAMAX PLUS D OSTEOPOROSIS RX (D560)	DR PHIL	TALK
WGRZ	MON	NOV 27 2006	05:56:47pm	2	5	60	COREG HEART RX (D560)	NEWS	NEWSCAST-LOCAL
WGRZ	TUE	NOV 28 2006	05:23:27pm	5	6	60	COREG HEART RX (D560)	NEWS	NEWSCAST-LOCAL
WKBW	WED	NOV 01 2006	12:23:57pm	9	19	60	COREG HEART RX (D560)	NEWS	NEWSCAST-LOCAL
WKBW	SUN	NOV 05 2006	07:24:31pm	5	6	60	ZELNORM IBS RX (D560)	AMERICA'S/HOME VIDEOS	SLICE-OF-LIFE
WKBW	MON	NOV 06 2006	05:40:10am	2	7	60	AMBIEN CR SLEEP RX (D560)	NEWS	NEWSCAST-LOCAL
WKBW	MON	NOV 06 2006	04:25:29pm	3	14	60	ZETIA CHOLESTEROL RX (D560)	P.M. BUFFALO	TALK
WKBW	TUE	NOV 07 2006	05:51:39am	5	7	60	AMBIEN CR SLEEP RX (D560)	NEWS	NEWSCAST-LOCAL
WKBW	WED	NOV 08 2006	12:21:35pm	5	16	60	COREG HEART RX (D560)	NEWS	NEWSCAST-LOCAL
WKBW	THU	NOV 09 2006	12:27:51pm	12	15	60	COREG HEART RX (D560)	NEWS	NEWSCAST-LOCAL
WKBW	FRI	NOV 10 2006	12:24:53pm	10	16	60	COREG HEART RX (D560)	NEWS	NEWSCAST-LOCAL
WKBW	MON	NOV 13 2006	05:40:25am	2	6	60	AMBIEN CR SLEEP RX (D560)	NEWS	NEWSCAST-LOCAL
WKBW	MON	NOV 13 2006	12:21:24pm	2	17	60	COREG HEART RX (D560)	NEWS	NEWSCAST-LOCAL
WKBW	MON	NOV 13 2006	04:27:08pm	12	17	60	PLAVIX BLOOD THINNER RX (D560)	P.M. BUFFALO	TALK
WKBW	MON	NOV 13 2006	04:28:08pm	13	17	15	PLAVIX BLOOD THINNER RX (D560)	P.M. BUFFALO	TALK
WKBW	WED	NOV 15 2006	05:53:10am	4	6	60	AMBIEN CR SLEEP RX (D560)	NEWS	NEWSCAST-LOCAL
WKBW	WED	NOV 15 2006	12:21:02pm	2	16	60	COREG HEART RX (D560)	NEWS	NEWSCAST-LOCAL
WKBW	THU	NOV 16 2006	12:28:20pm	16	17	60	COREG HEART RX (D560)	NEWS	NEWSCAST-LOCAL
WKBW	FRI	NOV 17 2006	12:25:44pm	11	17	60	COREG HEART RX (D560)	NEWS	NEWSCAST-LOCAL
WKBW	MON	NOV 20 2006	12:25:59pm	11	18	60	COREG HEART RX (D560)	NEWS	NEWSCAST-LOCAL
WKBW	TUE	NOV 21 2006	05:51:29am	3	7	60	LIPITOR CHOLESTEROL RX (D560)	NEWS	NEWSCAST-LOCAL
WKBW	TUE	NOV 21 2006	12:29:00pm	19	19	60	COREG HEART RX (D560)	NEWS	NEWSCAST-LOCAL
WKBW	WED	NOV 22 2006	09:38:39am	2	4	60	LIPITOR CHOLESTEROL RX (D560)	REGIS AND KELLY	TALK
WKBW	WED	NOV 22 2006	12:28:50pm	16	17	60	COREG HEART RX (D560)	NEWS	NEWSCAST-LOCAL
WKBW	THU	NOV 23 2006	05:50:56am	3	7	60	REQUIP RESTLESS LEGS SYNDROM RX (D560)	NEWS	NEWSCAST-LOCAL
WKBW	THU	NOV 23 2006	12:24:43pm	10	18	60	COREG HEART RX (D560)	NEWS	NEWSCAST-LOCAL
WKBW	FRI	NOV 24 2006	05:52:20am	4	6	60	REQUIP RESTLESS LEGS SYNDROM RX (D560)	NEWS	NEWSCAST-LOCAL
WKBW	MON	NOV 27 2006	05:52:08am	7	8	60	AMBIEN CR SLEEP RX (D560)	NEWS	NEWSCAST-LOCAL
WKBW	MON	NOV 27 2006	04:39:44pm	4	6	60	VYTORIN CHOLESTEROL RX (D560)	P.M. BUFFALO	TALK
WKBW	THU	NOV 30 2006	05:52:28am	6	7	60	COREG HEART RX (D560)	NEWS	NEWSCAST-LOCAL
WKBW	THU	NOV 30 2006	12:27:50pm	16	19	60	COREG HEART RX (D560)	NEWS	NEWSCAST-LOCAL
WUTV	WED	NOV 01 2006	12:54:15pm	2	12	60	ZELNORM IBS RX (D560)	JUDGE JOE BROWN	SLICE-OF-LIFE
WUTV	WED	NOV 01 2006	08:18:43pm	9	9	60	ZELNORM IBS RX (D560)	BONES-FOX	DRAMA/ADVNT
WUTV	THU	NOV 02 2006	12:15:00pm	3	8	60	ZELNORM IBS RX (D560)	DIVORCE COURT	SLICE-OF-LIFE
WUTV	THU	NOV 02 2006	08:15:05pm	6	9	60	ZELNORM IBS RX (D560)	'TIL DEATH-FOX	SITCOM
WUTV	FRI	NOV 03 2006	12:17:00pm	4	7	60	ZELNORM IBS RX (D560)	DIVORCE COURT	SLICE-OF-LIFE
WUTV	FRI	NOV 03 2006	12:48:37pm	6	7	60	ZELNORM IBS RX (D560)	JUDGE JOE BROWN	SLICE-OF-LIFE
WUTV	FRI	NOV 03 2006	11:57:01pm	5	8	60	ZELNORM IBS RX (D560)	THAT '70S SHOW	SITCOM
WUTV	SAT	NOV 04 2006	08:12:03pm	7	8	60	ZELNORM IBS RX (D560)	COPS-FOX	POLICE/SUSPENSE



## CNN Log

November 2006

### Prescription Medications (Category D560)

PROPERTY	DOW	DATE	TIME	POD POS	POD SZ	LEN	ACCOUNT	PROGRAM	PROG TYPE
CNN	WED	NOV 01 2006	05:37:39am	4	4	60	ROZEREM SLEEP RX (D560)	ANDERSON COOPER 360	NEWSCAST-NET
CNN	WED	NOV 01 2006	06:19:20am	1	4	60	AMBIEN CR SLEEP RX (D560)	AMERICAN MORNING	NEWSCAST-NET
CNN	WED	NOV 01 2006	06:38:52am	2	4	60	ZETIA CHOLESTEROL RX (D560)	AMERICAN MORNING	NEWSCAST-NET
CNN	WED	NOV 01 2006	08:56:49am	1	5	60	ZETIA CHOLESTEROL RX (D560)	AMERICAN MORNING	NEWSCAST-NET
CNN	WED	NOV 01 2006	09:40:40am	1	5	60	AMBIEN CR SLEEP RX (D560)	NEWSROOM	NEWSCAST-NET
CNN	WED	NOV 01 2006	11:27:25am	4	7	30	NASONEX ALLERGY RX (D560)	NEWSROOM	NEWSCAST-NET
CNN	WED	NOV 01 2006	11:56:42am	4	5	60	ZETIA CHOLESTEROL RX (D560)	NEWSROOM	NEWSCAST-NET
CNN	WED	NOV 01 2006	01:56:48pm	1	5	60	NEXIUM HEARTBURN RX (D560)	NEWSROOM	NEWSCAST-NET
CNN	WED	NOV 01 2006	02:55:23pm	1	6	60	LIPITOR CHOLESTEROL RX (D560)	NEWSROOM	NEWSCAST-NET
CNN	WED	NOV 01 2006	03:20:44pm	3	5	60	FOSAMAX OSTEOPOROSIS RX (D560)	NEWSROOM	NEWSCAST-NET
CNN	WED	NOV 01 2006	03:26:54pm	1	6	30	NASONEX ALLERGY RX (D560)	NEWSROOM	NEWSCAST-NET
CNN	WED	NOV 01 2006	03:28:24pm	5	6	60	CADUET RX (D560)	NEWSROOM	NEWSCAST-NET
CNN	WED	NOV 01 2006	05:55:26pm	4	6	45	FLOMAX ENLARGED PROSTATE RX (D560)	SITUATION ROOM	NEWSCAST-LOCAL
CNN	WED	NOV 01 2006	07:44:20pm	1	4	60	LUNESTA SLEEP RX (D560)	SITUATION ROOM	NEWSCAST-LOCAL
CNN	WED	NOV 01 2006	08:17:43pm	1	5	60	CIALIS ERECTILE DYSFUNCTION RX (D560)	SITUATION ROOM	NEWSCAST-LOCAL
CNN	WED	NOV 01 2006	08:41:48pm	3	3	60	LUNESTA SLEEP RX (D560)	SITUATION ROOM	NEWSCAST-LOCAL
CNN	WED	NOV 01 2006	08:56:38pm	1	6	60	ROZEREM SLEEP RX (D560)	SITUATION ROOM	NEWSCAST-LOCAL
CNN	WED	NOV 01 2006	09:54:23pm	4	5	60	ZETIA CHOLESTEROL RX (D560)	LARRY KING LIVE	TALK
CNN	WED	NOV 01 2006	10:36:18pm	2	7	60	ROZEREM SLEEP RX (D560)	ANDERSON COOPER 360	NEWSCAST-NET
CNN	WED	NOV 01 2006	10:54:45pm	1	6	60	ROZEREM SLEEP RX (D560)	ANDERSON COOPER 360	NEWSCAST-NET
CNN	WED	NOV 01 2006	11:18:28pm	2	5	30	NASONEX ALLERGY RX (D560)	ANDERSON COOPER 360	NEWSCAST-NET
CNN	WED	NOV 01 2006	11:36:10pm	1	4	60	LUNESTA SLEEP RX (D560)	ANDERSON COOPER 360	NEWSCAST-NET
CNN	WED	NOV 01 2006	12:53:47X	3	5	60	CIALIS ERECTILE DYSFUNCTION RX (D560)	LARRY KING LIVE	TALK
CNN	WED	NOV 01 2006	01:34:44X	2	5	60	ROZEREM SLEEP RX (D560)	ANDERSON COOPER 360	NEWSCAST-NET
CNN	WED	NOV 01 2006	02:17:55X	2	4	60	AMBIEN CR SLEEP RX (D560)	ANDERSON COOPER 360	NEWSCAST-NET
CNN	WED	NOV 01 2006	02:45:52X	1	2	30	NASONEX ALLERGY RX (D560)	ANDERSON COOPER 360	NEWSCAST-NET
CNN	WED	NOV 01 2006	03:38:31X	2	5	60	LUNESTA SLEEP RX (D560)	LARRY KING LIVE	TALK
CNN	THU	NOV 02 2006	05:34:29am	2	5	60	AMBIEN CR SLEEP RX (D560)	ANDERSON COOPER 360	NEWSCAST-NET
CNN	THU	NOV 02 2006	06:27:25am	2	6	60	SINGULAIR RX (D560)	AMERICAN MORNING	NEWSCAST-NET
CNN	THU	NOV 02 2006	08:56:48am	1	5	30	NASONEX ALLERGY RX (D560)	AMERICAN MORNING	NEWSCAST-NET
CNN	THU	NOV 02 2006	02:33:39pm	1	5	60	LIPITOR CHOLESTEROL RX (D560)	NEWSROOM	NEWSCAST-NET
CNN	THU	NOV 02 2006	02:34:39pm	2	5	60	NEXIUM HEARTBURN RX (D560)	NEWSROOM	NEWSCAST-NET
CNN	THU	NOV 02 2006	02:58:02pm	1	5	60	LIPITOR CHOLESTEROL RX (D560)	NEWSROOM	NEWSCAST-NET
CNN	THU	NOV 02 2006	04:47:41pm	1	3	60	LUNESTA SLEEP RX (D560)	SITUATION ROOM	NEWSCAST-LOCAL
CNN	THU	NOV 02 2006	05:25:35pm	6	10	60	LUNESTA SLEEP RX (D560)	SITUATION ROOM	NEWSCAST-LOCAL
CNN	THU	NOV 02 2006	05:36:52pm	2	6	60	LEVITRA ERECTILE DYSFUNCTION RX (D560)	SITUATION ROOM	NEWSCAST-LOCAL
CNN	THU	NOV 02 2006	05:50:51pm	5	5	60	LEVITRA ERECTILE DYSFUNCTION RX (D560)	SITUATION ROOM	NEWSCAST-LOCAL
CNN	THU	NOV 02 2006	07:39:52pm	4	4	60	ZETIA CHOLESTEROL RX (D560)	SITUATION ROOM	NEWSCAST-LOCAL
CNN	THU	NOV 02 2006	08:14:31pm	2	5	60	CIALIS ERECTILE DYSFUNCTION RX (D560)	SITUATION ROOM	NEWSCAST-LOCAL
CNN	THU	NOV 02 2006	08:42:11pm	1	4	60	ZETIA CHOLESTEROL RX (D560)	SITUATION ROOM	NEWSCAST-LOCAL
CNN	THU	NOV 02 2006	08:58:37pm	4	5	60	CIALIS ERECTILE DYSFUNCTION RX (D560)	SITUATION ROOM	NEWSCAST-LOCAL
CNN	THU	NOV 02 2006	09:52:25pm	2	7	60	ZETIA CHOLESTEROL RX (D560)	LARRY KING LIVE	TALK
CNN	THU	NOV 02 2006	10:31:40pm	4	5	30	NASONEX ALLERGY RX (D560)	ANDERSON COOPER 360	NEWSCAST-NET
CNN	THU	NOV 02 2006	10:43:34pm	3	3	60	ROZEREM SLEEP RX (D560)	ANDERSON COOPER 360	NEWSCAST-NET
CNN	THU	NOV 02 2006	10:55:37pm	2	6	60	AMBIEN CR SLEEP RX (D560)	ANDERSON COOPER 360	NEWSCAST-NET
CNN	THU	NOV 02 2006	11:27:52pm	2	6	60	CIALIS ERECTILE DYSFUNCTION RX (D560)	ANDERSON COOPER 360	NEWSCAST-NET
CNN	THU	NOV 02 2006	12:36:19X	1	3	60	FOSAMAX OSTEOPOROSIS RX (D560)	LARRY KING LIVE	TALK
CNN	THU	NOV 02 2006	12:37:19X	2	3	60	LUNESTA SLEEP RX (D560)	LARRY KING LIVE	TALK
CNN	THU	NOV 02 2006	12:52:01X	2	5	60	ZETIA CHOLESTEROL RX (D560)	LARRY KING LIVE	TALK
CNN	THU	NOV 02 2006	01:30:07X	3	5	60	ROZEREM SLEEP RX (D560)	ANDERSON COOPER 360	NEWSCAST-NET
CNN	THU	NOV 02 2006	01:56:28X	4	5	60	CIALIS ERECTILE DYSFUNCTION RX (D560)	ANDERSON COOPER 360	NEWSCAST-NET
CNN	THU	NOV 02 2006	02:09:04X	3	4	60	NEXIUM HEARTBURN RX (D560)	ANDERSON COOPER 360	NEWSCAST-NET
CNN	THU	NOV 02 2006	02:18:02X	1	4	60	LUNESTA SLEEP RX (D560)	ANDERSON COOPER 360	NEWSCAST-NET
CNN	THU	NOV 02 2006	02:43:40X	2	3	30	NASONEX ALLERGY RX (D560)	ANDERSON COOPER 360	NEWSCAST-NET
CNN	THU	NOV 02 2006	03:18:45X	2	4	45	FLOMAX ENLARGED PROSTATE RX (D560)	LARRY KING LIVE	TALK
CNN	THU	NOV 02 2006	03:27:48X	3	6	60	FOSAMAX OSTEOPOROSIS RX (D560)	LARRY KING LIVE	TALK
CNN	THU	NOV 02 2006	04:27:25X	3	6	60	ACTONEL OSTEOPOROSIS RX (D560)	LOU DOBBS TONIGHT	NEWS EDUCATNL
CNN	FRI	NOV 03 2006	05:40:20am	3	3	60	ROZEREM SLEEP RX (D560)	ANDERSON COOPER 360	NEWSCAST-NET
CNN	FRI	NOV 03 2006	05:58:00am	4	4	60	ACTONEL OSTEOPOROSIS RX (D560)	ANDERSON COOPER 360	NEWSCAST-NET
CNN	FRI	NOV 03 2006	07:38:58am	3	4	60	AMBIEN CR SLEEP RX (D560)	AMERICAN MORNING	NEWSCAST-NET
CNN	FRI	NOV 03 2006	08:22:02am	5	7	60	ZETIA CHOLESTEROL RX (D560)	AMERICAN MORNING	NEWSCAST-NET
CNN	FRI	NOV 03 2006	08:39:20am	1	5	30	NASONEX ALLERGY RX (D560)	AMERICAN MORNING	NEWSCAST-NET
CNN	FRI	NOV 03 2006	10:13:22am	2	5	60	ZETIA CHOLESTEROL RX (D560)	NEWSROOM	NEWSCAST-NET
CNN	FRI	NOV 03 2006	11:55:00am	1	4	60	CRESTOR CHOLESTEROL RX (D560)	NEWSROOM	NEWSCAST-NET
CNN	FRI	NOV 03 2006	12:43:24pm	5	6	60	LEVITRA ERECTILE DYSFUNCTION RX (D560)	YOUR WORLD TODAY	NEWSCAST-NET
CNN	FRI	NOV 03 2006	01:24:50pm	4	5	60	NEXIUM HEARTBURN RX (D560)	NEWSROOM	NEWSCAST-NET
CNN	FRI	NOV 03 2006	01:25:50pm	5	5	60	CADUET RX (D560)	NEWSROOM	NEWSCAST-NET
CNN	FRI	NOV 03 2006	03:31:42pm	3	5	30	NASONEX ALLERGY RX (D560)	NEWSROOM	NEWSCAST-NET
CNN	FRI	NOV 03 2006	04:33:22pm	5	7	60	LEVITRA ERECTILE DYSFUNCTION RX (D560)	SITUATION ROOM	NEWSCAST-LOCAL
CNN	FRI	NOV 03 2006	04:55:20pm	2	7	60	LEVITRA ERECTILE DYSFUNCTION RX (D560)	SITUATION ROOM	NEWSCAST-LOCAL
CNN	FRI	NOV 03 2006	05:36:58pm	1	7	60	LEVITRA ERECTILE DYSFUNCTION RX (D560)	SITUATION ROOM	NEWSCAST-LOCAL
CNN	FRI	NOV 03 2006	08:30:06pm	2	4	60	AMBIEN CR SLEEP RX (D560)	BROKEN GOVERNMENT	POLITICAL
CNN	FRI	NOV 03 2006	08:52:04pm	1	5	60	CIALIS ERECTILE DYSFUNCTION RX (D560)	BROKEN GOVERNMENT	POLITICAL
CNN	FRI	NOV 03 2006	09:05:58pm	1	5	60	PLAVIX BLOOD THINNER RX (D560)	BROKEN GOVERNMENT	POLITICAL
CNN	FRI	NOV 03 2006	09:06:58pm	2	5	15	PLAVIX BLOOD THINNER RX (D560)	BROKEN GOVERNMENT	POLITICAL
CNN	FRI	NOV 03 2006	09:26:40pm	3	6	60	ROZEREM SLEEP RX (D560)	BROKEN GOVERNMENT	POLITICAL
CNN	FRI	NOV 03 2006	09:52:16pm	4	6	60	ROZEREM SLEEP RX (D560)	BROKEN GOVERNMENT	POLITICAL
CNN	FRI	NOV 03 2006	11:38:24pm	1	5	60	ROZEREM SLEEP RX (D560)	BROKEN GOVERNMENT	POLITICAL
CNN	FRI	NOV 03 2006	11:52:33pm	1	7	30	NASONEX ALLERGY RX (D560)	BROKEN GOVERNMENT	POLITICAL

CNN	THU	NOV 30 2006	02:22:44pm	4	6	60 CADUET RX (D560)	NEWSROOM	NEWSCAST-NET
CNN	THU	NOV 30 2006	02:29:09pm	6	9	60 ARICEPT ALZHEIMERS RX (D560)	NEWSROOM	NEWSCAST-NET
CNN	THU	NOV 30 2006	02:34:00pm	1	5	60 CADUET RX (D560)	NEWSROOM	NEWSCAST-NET
CNN	THU	NOV 30 2006	03:13:50pm	4	5	60 FOSAMAX PLUS D OSTEOPOROSIS RX (D560)	NEWSROOM	NEWSCAST-NET
CNN	THU	NOV 30 2006	05:13:51pm	3	4	60 NEXIUM HEARTBURN RX (D560)	SITUATION ROOM	NEWSCAST-LOCAL
CNN	THU	NOV 30 2006	05:55:03pm	2	6	60 AVODART ENLARGED PROSTATE RX (D560)	SITUATION ROOM	NEWSCAST-LOCAL
CNN	THU	NOV 30 2006	07:11:57pm	2	4	60 LUNESTA SLEEP RX (D560)	SITUATION ROOM	NEWSCAST-LOCAL
CNN	THU	NOV 30 2006	07:55:45pm	4	5	60 CIALIS ERECTILE DYSFUNCTION RX (D560)	SITUATION ROOM	NEWSCAST-LOCAL
CNN	THU	NOV 30 2006	08:22:56pm	5	6	30 NASONEX ALLERGY RX (D560)	PAULA ZAHN NOW	NEWSCAST-NET
CNN	THU	NOV 30 2006	08:56:54pm	2	5	60 LUNESTA SLEEP RX (D560)	PAULA ZAHN NOW	NEWSCAST-NET
CNN	THU	NOV 30 2006	09:08:19pm	1	5	60 PLAVIX BLOOD THINNER RX (D560)	LARRY KING LIVE	TALK
CNN	THU	NOV 30 2006	09:09:18pm	2	5	15 PLAVIX BLOOD THINNER RX (D560)	LARRY KING LIVE	TALK
CNN	THU	NOV 30 2006	09:37:37pm	2	5	60 PLAVIX BLOOD THINNER RX (D560)	LARRY KING LIVE	TALK
CNN	THU	NOV 30 2006	09:38:36pm	3	5	15 PLAVIX BLOOD THINNER RX (D560)	LARRY KING LIVE	TALK
CNN	THU	NOV 30 2006	10:25:17pm	2	7	30 NASONEX ALLERGY RX (D560)	ANDERSON COOPER 360	NEWSCAST-NET
CNN	THU	NOV 30 2006	10:35:06pm	1	3	60 CIALIS ERECTILE DYSFUNCTION RX (D560)	ANDERSON COOPER 360	NEWSCAST-NET
CNN	THU	NOV 30 2006	11:20:06pm	1	5	60 CIALIS ERECTILE DYSFUNCTION RX (D560)	ANDERSON COOPER 360	NEWSCAST-NET
CNN	THU	NOV 30 2006	11:28:20pm	2	6	60 LEVITRA ERECTILE DYSFUNCTION RX (D560)	ANDERSON COOPER 360	NEWSCAST-NET
CNN	THU	NOV 30 2006	12:08:16X	1	5	60 PLAVIX BLOOD THINNER RX (D560)	LARRY KING LIVE	TALK
CNN	THU	NOV 30 2006	12:09:15X	2	5	15 PLAVIX BLOOD THINNER RX (D560)	LARRY KING LIVE	TALK
CNN	THU	NOV 30 2006	12:16:09X	2	4	60 FOSAMAX PLUS D OSTEOPOROSIS RX (D560)	LARRY KING LIVE	TALK
CNN	THU	NOV 30 2006	12:28:09X	1	5	60 ENBREL RX (D560)	LARRY KING LIVE	TALK
CNN	THU	NOV 30 2006	01:36:01X	5	6	60 COREG HEART RX (D560)	ANDERSON COOPER 360	NEWSCAST-NET
CNN	THU	NOV 30 2006	02:21:10X	4	5	30 NASONEX ALLERGY RX (D560)	ANDERSON COOPER 360	NEWSCAST-NET
CNN	THU	NOV 30 2006	02:39:49X	1	4	60 NEXIUM HEARTBURN RX (D560)	ANDERSON COOPER 360	NEWSCAST-NET
CNN	THU	NOV 30 2006	03:16:20X	2	4	60 VYTORIN CHOLESTEROL RX (D560)	LARRY KING LIVE	TALK
CNN	THU	NOV 30 2006	03:37:09X	1	5	60 LUNESTA SLEEP RX (D560)	LARRY KING LIVE	TALK
CNN	THU	NOV 30 2006	03:54:22X	1	6	60 FOSAMAX PLUS D OSTEOPOROSIS RX (D560)	LARRY KING LIVE	TALK

# A & E Log

November 2006

## Prescription Medications (Category D560)

PROPERTY	DOW	DATE	TIME	POD POS	POD SZ	LEN	ACCOUNT	PROGRAM	PROG TYPE
A&E	WED	NOV 01 2006	09:23:41am	2	8	60	ACTONEL OSTEOPOROSIS RX (D560)	CITY CONFIDENTIAL	DRAMA/ADVNTN
A&E	WED	NOV 01 2006	11:33:36am	2	7	60	CYMBALTA RX (D560)	COLD CASE FILES	DOCUMENTARY
A&E	WED	NOV 01 2006	01:30:17pm	3	7	60	NEULASTA INFECTION RX (D560)	CSI: MIAMI	POLICE/SUSPENSE
A&E	WED	NOV 01 2006	03:23:41pm	2	8	60	ACTONEL OSTEOPOROSIS RX (D560)	CITY CONFIDENTIAL	DRAMA/ADVNTN
A&E	WED	NOV 01 2006	05:33:36pm	2	7	60	CYMBALTA RX (D560)	COLD CASE FILES	DOCUMENTARY
A&E	WED	NOV 01 2006	07:30:17pm	3	7	60	NEULASTA INFECTION RX (D560)	CSI: MIAMI	POLICE/SUSPENSE
A&E	WED	NOV 01 2006	08:07:08pm	5	7	60	AMBIEN CR SLEEP RX (D560)	CSI: MIAMI	POLICE/SUSPENSE
A&E	WED	NOV 01 2006	09:21:10pm	7	10	60	NEULASTA INFECTION RX (D560)	DOG THE BOUNTY HUNTER	SLICE-OF-LIFE
A&E	WED	NOV 01 2006	11:20:17pm	6	9	60	LEVITRA ERECTILE DYSFUNCTION RX (D560)	CRISS ANGEL MINDFREAK	VARIETY-GENERAL
A&E	WED	NOV 01 2006	11:36:47pm	2	9	60	NEXIUM HEARTBURN RX (D560)	CRISS ANGEL MINDFREAK	VARIETY-GENERAL
A&E	WED	NOV 01 2006	11:38:17pm	4	9	30	NASONEX ALLERGY RX (D560)	CRISS ANGEL MINDFREAK	VARIETY-GENERAL
A&E	WED	NOV 01 2006	12:07:08X	5	7	60	AMBIEN CR SLEEP RX (D560)	CSI: MIAMI	POLICE/SUSPENSE
A&E	WED	NOV 01 2006	01:21:10X	7	10	60	NEULASTA INFECTION RX (D560)	DOG THE BOUNTY HUNTER	SLICE-OF-LIFE
A&E	WED	NOV 01 2006	03:20:17X	6	9	60	LEVITRA ERECTILE DYSFUNCTION RX (D560)	CRISS ANGEL MINDFREAK	VARIETY-GENERAL
A&E	WED	NOV 01 2006	03:36:47X	2	9	60	NEXIUM HEARTBURN RX (D560)	CRISS ANGEL MINDFREAK	VARIETY-GENERAL
A&E	WED	NOV 01 2006	03:38:17X	4	9	30	NASONEX ALLERGY RX (D560)	CRISS ANGEL MINDFREAK	VARIETY-GENERAL
A&E	THU	NOV 02 2006	08:52:02am	8	8	60	CADUET RX (D560)	24	DRAMA/ADVNTN
A&E	THU	NOV 02 2006	09:22:31am	2	7	60	LUNESTA SLEEP RX (D560)	CITY CONFIDENTIAL	DRAMA/ADVNTN
A&E	THU	NOV 02 2006	09:35:39am	4	7	60	NEULASTA INFECTION RX (D560)	CITY CONFIDENTIAL	DRAMA/ADVNTN
A&E	THU	NOV 02 2006	09:37:54am	7	7	60	AMBIEN CR SLEEP RX (D560)	CITY CONFIDENTIAL	DRAMA/ADVNTN
A&E	THU	NOV 02 2006	11:19:28am	2	6	60	LUNESTA SLEEP RX (D560)	COLD CASE FILES	DOCUMENTARY
A&E	THU	NOV 02 2006	11:33:49am	4	7	60	AMBIEN CR SLEEP RX (D560)	COLD CASE FILES	DOCUMENTARY
A&E	THU	NOV 02 2006	11:44:23am	2	7	60	ACTONEL OSTEOPOROSIS RX (D560)	COLD CASE FILES	DOCUMENTARY
A&E	THU	NOV 02 2006	02:52:02pm	8	8	60	CADUET RX (D560)	24	DRAMA/ADVNTN
A&E	THU	NOV 02 2006	03:22:31pm	2	7	60	LUNESTA SLEEP RX (D560)	CITY CONFIDENTIAL	DRAMA/ADVNTN
A&E	THU	NOV 02 2006	03:35:39pm	4	7	60	NEULASTA INFECTION RX (D560)	CITY CONFIDENTIAL	DRAMA/ADVNTN
A&E	THU	NOV 02 2006	03:37:54pm	7	7	60	AMBIEN CR SLEEP RX (D560)	CITY CONFIDENTIAL	DRAMA/ADVNTN
A&E	THU	NOV 02 2006	05:19:28pm	2	6	60	LUNESTA SLEEP RX (D560)	COLD CASE FILES	DOCUMENTARY
A&E	THU	NOV 02 2006	05:33:49pm	4	7	60	AMBIEN CR SLEEP RX (D560)	COLD CASE FILES	DOCUMENTARY
A&E	THU	NOV 02 2006	05:44:23pm	2	7	60	ACTONEL OSTEOPOROSIS RX (D560)	COLD CASE FILES	DOCUMENTARY
A&E	THU	NOV 02 2006	08:05:21pm	4	7	60	LUNESTA SLEEP RX (D560)	CSI: MIAMI	POLICE/SUSPENSE
A&E	THU	NOV 02 2006	08:51:27pm	6	7	60	NEULASTA INFECTION RX (D560)	CSI: MIAMI	POLICE/SUSPENSE
A&E	THU	NOV 02 2006	10:51:37pm	6	9	60	NEXIUM HEARTBURN RX (D560)	DALLAS SWAT	SLICE-OF-LIFE
A&E	THU	NOV 02 2006	11:37:40pm	7	8	60	CIALIS ERECTILE DYSFUNCTION RX (D560)	COLD CASE FILES	DOCUMENTARY
A&E	THU	NOV 02 2006	12:05:21X	4	7	60	LUNESTA SLEEP RX (D560)	CSI: MIAMI	POLICE/SUSPENSE
A&E	THU	NOV 02 2006	12:51:27X	6	7	60	NEULASTA INFECTION RX (D560)	CSI: MIAMI	POLICE/SUSPENSE
A&E	THU	NOV 02 2006	02:51:37X	6	9	60	NEXIUM HEARTBURN RX (D560)	DALLAS SWAT	SLICE-OF-LIFE
A&E	THU	NOV 02 2006	03:37:40X	7	8	60	CIALIS ERECTILE DYSFUNCTION RX (D560)	COLD CASE FILES	DOCUMENTARY
A&E	FRI	NOV 03 2006	11:30:42am	2	7	60	NEULASTA INFECTION RX (D560)	COLD CASE FILES	DOCUMENTARY
A&E	FRI	NOV 03 2006	12:32:31pm	7	9	60	CADUET RX (D560)	CROSSING JORDAN	DRAMA/ADVNTN
A&E	FRI	NOV 03 2006	01:51:06pm	8	8	60	CIALIS ERECTILE DYSFUNCTION RX (D560)	CSI: MIAMI	POLICE/SUSPENSE
A&E	FRI	NOV 03 2006	05:30:42pm	2	7	60	NEULASTA INFECTION RX (D560)	COLD CASE FILES	DOCUMENTARY
A&E	FRI	NOV 03 2006	06:32:31pm	7	9	60	CADUET RX (D560)	CROSSING JORDAN	DRAMA/ADVNTN
A&E	FRI	NOV 03 2006	07:51:06pm	8	8	60	CIALIS ERECTILE DYSFUNCTION RX (D560)	CSI: MIAMI	POLICE/SUSPENSE
A&E	FRI	NOV 03 2006	08:33:06pm	4	7	30	NASONEX ALLERGY RX (D560)	CSI: MIAMI	POLICE/SUSPENSE
A&E	FRI	NOV 03 2006	09:52:49pm	7	7	60	CIALIS ERECTILE DYSFUNCTION RX (D560)	CSI: MIAMI	POLICE/SUSPENSE
A&E	FRI	NOV 03 2006	10:13:43pm	2	6	60	ROZEREM SLEEP RX (D560)	CSI: MIAMI	POLICE/SUSPENSE
A&E	FRI	NOV 03 2006	10:23:35pm	5	8	30	NASONEX ALLERGY RX (D560)	CSI: MIAMI	POLICE/SUSPENSE
A&E	FRI	NOV 03 2006	11:22:07pm	3	6	60	NEULASTA INFECTION RX (D560)	CSI: MIAMI	POLICE/SUSPENSE
A&E	FRI	NOV 03 2006	12:33:06X	4	7	30	NASONEX ALLERGY RX (D560)	CSI: MIAMI	POLICE/SUSPENSE
A&E	SAT	NOV 04 2006	07:25:06am	5	8	60	LEVITRA ERECTILE DYSFUNCTION RX (D560)	MURDER SHE WROTE	DRAMA/ADVNTN
A&E	SAT	NOV 04 2006	07:50:09am	2	6	60	CYMBALTA RX (D560)	MURDER SHE WROTE	DRAMA/ADVNTN
A&E	SAT	NOV 04 2006	07:51:39am	4	6	60	NEXIUM HEARTBURN RX (D560)	MURDER SHE WROTE	DRAMA/ADVNTN
A&E	SAT	NOV 04 2006	08:29:07am	5	7	60	NEULASTA INFECTION RX (D560)	MURDER SHE WROTE	DRAMA/ADVNTN
A&E	SAT	NOV 04 2006	08:41:48am	5	8	60	CYMBALTA RX (D560)	MURDER SHE WROTE	DRAMA/ADVNTN
A&E	SAT	NOV 04 2006	08:50:46am	5	7	60	LEVITRA ERECTILE DYSFUNCTION RX (D560)	MURDER SHE WROTE	DRAMA/ADVNTN
A&E	SAT	NOV 04 2006	09:23:28am	6	6	60	CIALIS ERECTILE DYSFUNCTION RX (D560)	BIOGRAPHY	DOCUMENTARY
A&E	SAT	NOV 04 2006	09:29:59am	2	7	60	BONIVA OSTEOPOROSIS RX (D560)	BIOGRAPHY	DOCUMENTARY
A&E	SAT	NOV 04 2006	09:40:25am	3	6	60	LEVITRA ERECTILE DYSFUNCTION RX (D560)	BIOGRAPHY	DOCUMENTARY
A&E	SAT	NOV 04 2006	10:23:45am	5	8	60	BONIVA OSTEOPOROSIS RX (D560)	BIOGRAPHY	DOCUMENTARY
A&E	SAT	NOV 04 2006	10:49:43am	7	9	60	BONIVA OSTEOPOROSIS RX (D560)	BIOGRAPHY	DOCUMENTARY
A&E	SAT	NOV 04 2006	12:12:24pm	4	6	60	CADUET RX (D560)	PAUL MCCARTNEY: THE SPAC	VARIETY-MUSICAL
A&E	SAT	NOV 04 2006	12:24:03pm	6	7	60	LIPITOR CHOLESTEROL RX (D560)	PAUL MCCARTNEY: THE SPAC	VARIETY-MUSICAL
A&E	SAT	NOV 04 2006	02:36:38pm	6	8	60	CYMBALTA RX (D560)	MORE HAUNTED HOUSES: TOR	DOCUMENTARY
A&E	SAT	NOV 04 2006	03:35:33pm	6	7	60	CADUET RX (D560)	CRISS ANGEL MINDFREAK	VARIETY-GENERAL
A&E	SAT	NOV 04 2006	04:23:11pm	5	8	60	CADUET RX (D560)	CRISS ANGEL MINDFREAK	VARIETY-GENERAL
A&E	SAT	NOV 04 2006	06:21:40pm	2	6	60	ACTONEL OSTEOPOROSIS RX (D560)	COLD CASE FILES	DOCUMENTARY
A&E	SAT	NOV 04 2006	06:23:10pm	4	6	60	LEVITRA ERECTILE DYSFUNCTION RX (D560)	COLD CASE FILES	DOCUMENTARY
A&E	SAT	NOV 04 2006	06:37:13pm	5	7	60	ROZEREM SLEEP RX (D560)	COLD CASE FILES	DOCUMENTARY
A&E	SAT	NOV 04 2006	07:22:10pm	3	7	60	ROZEREM SLEEP RX (D560)	COLD CASE FILES	DOCUMENTARY
A&E	SAT	NOV 04 2006	07:35:06pm	1	7	60	ROZEREM SLEEP RX (D560)	COLD CASE FILES	DOCUMENTARY
A&E	SAT	NOV 04 2006	08:12:40pm	4	9	60	CIALIS ERECTILE DYSFUNCTION RX (D560)	COLD CASE FILES	DOCUMENTARY
A&E	SAT	NOV 04 2006	08:28:24pm	4	8	60	CIALIS ERECTILE DYSFUNCTION RX (D560)	COLD CASE FILES	DOCUMENTARY
A&E	SAT	NOV 04 2006	12:12:40X	4	9	60	CIALIS ERECTILE DYSFUNCTION RX (D560)	COLD CASE FILES	DOCUMENTARY
A&E	SAT	NOV 04 2006	12:28:24X	4	8	60	CIALIS ERECTILE DYSFUNCTION RX (D560)	COLD CASE FILES	DOCUMENTARY
A&E	SUN	NOV 05 2006	07:09:02am	2	6	60	LEVITRA ERECTILE DYSFUNCTION RX (D560)	INSIDE THIS OLD HOUSE	INSTRCTN/ADVICE
A&E	SUN	NOV 05 2006	07:18:55am	2	7	60	AMBIEN CR SLEEP RX (D560)	INSIDE THIS OLD HOUSE	INSTRCTN/ADVICE
A&E	SUN	NOV 05 2006	07:37:52am	2	6	60	CIALIS ERECTILE DYSFUNCTION RX (D560)	ASK THIS OLD HOUSE	INSTRCTN/ADVICE
A&E	SUN	NOV 05 2006	07:51:39am	7	9	60	AMBIEN CR SLEEP RX (D560)	ASK THIS OLD HOUSE	INSTRCTN/ADVICE
A&E	SUN	NOV 05 2006	09:01:57am	3	10	60	LUNESTA SLEEP RX (D560)	BREAKFAST WITH THE ARTS	VARIETY-GENERAL
A&E	SUN	NOV 05 2006	10:56:57am	7	8	60	CADUET RX (D560)	TIGHTROPE MOVIE	FEATURE FILM
A&E	SUN	NOV 05 2006	11:54:05am	5	9	60	CIALIS ERECTILE DYSFUNCTION RX (D560)	TIGHTROPE MOVIE	FEATURE FILM
A&E	SUN	NOV 05 2006	12:06:21pm	9	10	60	CIALIS ERECTILE DYSFUNCTION RX (D560)	TIGHTROPE MOVIE	FEATURE FILM
A&E	SUN	NOV 05 2006	12:57:03pm	6	7	60	LUNESTA SLEEP RX (D560)	CHILD STARS III: TEEN RO	DOCUMENTARY
A&E	SUN	NOV 05 2006	02:05:36pm	6	7	60	CYMBALTA RX (D560)	CHILD STARS III: TEEN RO	DOCUMENTARY
A&E	SUN	NOV 05 2006	03:52:03pm	9	10	60	LUNESTA SLEEP RX (D560)	DESIGNING BLIND	INSTRCTN/ADVICE
A&E	SUN	NOV 05 2006	07:35:18pm	1	9	60	ROZEREM SLEEP RX (D560)	FLIP THIS HOUSE	INSTRCTN/ADVICE
A&E	SUN	NOV 05 2006	08:35:14pm	8	9	60	AMBIEN CR SLEEP RX (D560)	FLIP THIS HOUSE	INSTRCTN/ADVICE
A&E	SUN	NOV 05 2006	12:35:14X	8	9	60	AMBIEN CR SLEEP RX (D560)	FLIP THIS HOUSE	INSTRCTN/ADVICE

A&E	MON	NOV 06 2006	08:27:11am	7	9	60 CYMBALTA RX (D560)	24	DRAMA/ADVNTN
A&E	MON	NOV 06 2006	08:49:52am	6	9	60 BONIVA OSTEOPOROSIS RX (D560)	24	DRAMA/ADVNTN
A&E	MON	NOV 06 2006	11:24:02am	4	6	60 CYMBALTA RX (D560)	COLD CASE FILES	DOCUMENTARY
A&E	MON	NOV 06 2006	11:34:56am	3	9	60 LEVITRA ERECTILE DYSFUNCTION RX (D560)	COLD CASE FILES	DOCUMENTARY
A&E	MON	NOV 06 2006	11:36:26am	5	9	60 NEXIUM HEARTBURN RX (D560)	COLD CASE FILES	DOCUMENTARY
A&E	MON	NOV 06 2006	12:05:43pm	7	10	60 AMBIEN CR SLEEP RX (D560)	CROSSING JORDAN	DRAMA/ADVNTN
A&E	MON	NOV 06 2006	02:27:11pm	6	8	60 CYMBALTA RX (D560)	24	DRAMA/ADVNTN
A&E	MON	NOV 06 2006	02:49:52pm	6	9	60 BONIVA OSTEOPOROSIS RX (D560)	24	DRAMA/ADVNTN
A&E	MON	NOV 06 2006	05:24:02pm	5	7	60 CYMBALTA RX (D560)	COLD CASE FILES	DOCUMENTARY
A&E	MON	NOV 06 2006	05:34:56pm	3	9	60 LEVITRA ERECTILE DYSFUNCTION RX (D560)	COLD CASE FILES	DOCUMENTARY
A&E	MON	NOV 06 2006	05:36:26pm	5	9	60 NEXIUM HEARTBURN RX (D560)	COLD CASE FILES	DOCUMENTARY
A&E	MON	NOV 06 2006	06:05:43pm	7	10	60 AMBIEN CR SLEEP RX (D560)	CROSSING JORDAN	DRAMA/ADVNTN
A&E	MON	NOV 06 2006	08:05:26pm	5	6	60 ROZEREM SLEEP RX (D560)	CSI: MIAMI	POLICE/SUSPENSE
A&E	MON	NOV 06 2006	08:36:58pm	2	7	60 AMBIEN CR SLEEP RX (D560)	CSI: MIAMI	POLICE/SUSPENSE
A&E	MON	NOV 06 2006	09:05:21pm	3	6	30 NASONEX ALLERGY RX (D560)	CSI: MIAMI	POLICE/SUSPENSE
A&E	MON	NOV 06 2006	09:06:21pm	5	6	60 RESTASIS CHRONIC DRY EYE RX (D560)	CSI: MIAMI	POLICE/SUSPENSE
A&E	MON	NOV 06 2006	09:32:01pm	5	6	60 AMBIEN CR SLEEP RX (D560)	CSI: MIAMI	POLICE/SUSPENSE
A&E	MON	NOV 06 2006	11:04:19pm	3	6	60 CRESTOR CHOLESTEROL RX (D560)	CSI: MIAMI	POLICE/SUSPENSE
A&E	MON	NOV 06 2006	11:15:36pm	4	8	30 NASONEX ALLERGY RX (D560)	CSI: MIAMI	POLICE/SUSPENSE
A&E	MON	NOV 06 2006	11:28:31pm	2	6	60 NEXIUM HEARTBURN RX (D560)	CSI: MIAMI	POLICE/SUSPENSE
A&E	MON	NOV 06 2006	11:29:46pm	4	6	60 LEVITRA ERECTILE DYSFUNCTION RX (D560)	CSI: MIAMI	POLICE/SUSPENSE
A&E	MON	NOV 06 2006	11:43:16pm	4	6	60 CRESTOR CHOLESTEROL RX (D560)	CSI: MIAMI	POLICE/SUSPENSE
A&E	MON	NOV 06 2006	11:52:01pm	4	6	30 RESTASIS CHRONIC DRY EYE RX (D560)	CSI: MIAMI	POLICE/SUSPENSE
A&E	MON	NOV 06 2006	12:05:26X	5	6	60 ROZEREM SLEEP RX (D560)	CSI: MIAMI	POLICE/SUSPENSE
A&E	MON	NOV 06 2006	12:36:58X	2	7	60 AMBIEN CR SLEEP RX (D560)	CSI: MIAMI	POLICE/SUSPENSE
A&E	MON	NOV 06 2006	01:05:21X	3	6	30 NASONEX ALLERGY RX (D560)	CSI: MIAMI	POLICE/SUSPENSE
A&E	MON	NOV 06 2006	01:06:21X	5	6	60 RESTASIS CHRONIC DRY EYE RX (D560)	CSI: MIAMI	POLICE/SUSPENSE
A&E	MON	NOV 06 2006	01:32:01X	5	6	60 AMBIEN CR SLEEP RX (D560)	CSI: MIAMI	POLICE/SUSPENSE
A&E	MON	NOV 06 2006	03:04:19X	3	6	60 CRESTOR CHOLESTEROL RX (D560)	CSI: MIAMI	POLICE/SUSPENSE
A&E	MON	NOV 06 2006	03:15:36X	3	7	30 NASONEX ALLERGY RX (D560)	CSI: MIAMI	POLICE/SUSPENSE
A&E	MON	NOV 06 2006	03:28:31X	2	6	60 NEXIUM HEARTBURN RX (D560)	CSI: MIAMI	POLICE/SUSPENSE
A&E	MON	NOV 06 2006	03:29:46X	4	6	60 LEVITRA ERECTILE DYSFUNCTION RX (D560)	CSI: MIAMI	POLICE/SUSPENSE
A&E	MON	NOV 06 2006	03:43:16X	4	6	60 CRESTOR CHOLESTEROL RX (D560)	CSI: MIAMI	POLICE/SUSPENSE
A&E	MON	NOV 06 2006	03:52:01X	4	6	30 RESTASIS CHRONIC DRY EYE RX (D560)	CSI: MIAMI	POLICE/SUSPENSE
A&E	TUE	NOV 07 2006	09:37:19am	4	8	60 CYMBALTA RX (D560)	CITY CONFIDENTIAL	DRAMA/ADVNTN
A&E	TUE	NOV 07 2006	10:37:07am	5	8	60 CYMBALTA RX (D560)	AMERICAN JUSTICE	POLICE/SUSPENSE
A&E	TUE	NOV 07 2006	11:35:38am	6	10	60 CYMBALTA RX (D560)	COLD CASE FILES	DOCUMENTARY
A&E	TUE	NOV 07 2006	01:28:26pm	5	7	60 LUNESTA SLEEP RX (D560)	CSI: MIAMI	POLICE/SUSPENSE
A&E	TUE	NOV 07 2006	03:37:19pm	4	8	60 CYMBALTA RX (D560)	CITY CONFIDENTIAL	DRAMA/ADVNTN
A&E	TUE	NOV 07 2006	04:37:07pm	5	8	60 CYMBALTA RX (D560)	AMERICAN JUSTICE	POLICE/SUSPENSE
A&E	TUE	NOV 07 2006	05:35:38pm	6	10	60 CYMBALTA RX (D560)	COLD CASE FILES	DOCUMENTARY
A&E	TUE	NOV 07 2006	07:28:26pm	5	7	60 LUNESTA SLEEP RX (D560)	CSI: MIAMI	POLICE/SUSPENSE
A&E	TUE	NOV 07 2006	08:34:42pm	5	7	30 RESTASIS CHRONIC DRY EYE RX (D560)	CSI: MIAMI	POLICE/SUSPENSE
A&E	TUE	NOV 07 2006	10:06:29pm	3	9	60 CRESTOR CHOLESTEROL RX (D560)	DOG THE BOUNTY HUNTER	SLICE-OF-LIFE
A&E	TUE	NOV 07 2006	10:07:59pm	5	9	60 RESTASIS CHRONIC DRY EYE RX (D560)	DOG THE BOUNTY HUNTER	SLICE-OF-LIFE
A&E	TUE	NOV 07 2006	10:37:03pm	3	9	60 CRESTOR CHOLESTEROL RX (D560)	DOG THE BOUNTY HUNTER	SLICE-OF-LIFE
A&E	TUE	NOV 07 2006	11:06:50pm	1	5	60 NEULASTA INFECTION RX (D560)	DOG THE BOUNTY HUNTER	SLICE-OF-LIFE
A&E	TUE	NOV 07 2006	11:08:50pm	3	5	60 NEXIUM HEARTBURN RX (D560)	DOG THE BOUNTY HUNTER	SLICE-OF-LIFE
A&E	TUE	NOV 07 2006	12:34:42X	4	6	30 RESTASIS CHRONIC DRY EYE RX (D560)	CSI: MIAMI	POLICE/SUSPENSE
A&E	TUE	NOV 07 2006	02:06:29X	3	9	60 CRESTOR CHOLESTEROL RX (D560)	DOG THE BOUNTY HUNTER	SLICE-OF-LIFE
A&E	TUE	NOV 07 2006	02:07:59X	5	9	60 RESTASIS CHRONIC DRY EYE RX (D560)	DOG THE BOUNTY HUNTER	SLICE-OF-LIFE
A&E	TUE	NOV 07 2006	02:37:03X	3	9	60 CRESTOR CHOLESTEROL RX (D560)	DOG THE BOUNTY HUNTER	SLICE-OF-LIFE
A&E	TUE	NOV 07 2006	03:06:50X	1	5	60 NEULASTA INFECTION RX (D560)	DOG THE BOUNTY HUNTER	SLICE-OF-LIFE
A&E	TUE	NOV 07 2006	03:08:50X	3	5	60 NEXIUM HEARTBURN RX (D560)	DOG THE BOUNTY HUNTER	SLICE-OF-LIFE
A&E	WED	NOV 08 2006	08:37:30am	4	8	60 NEXIUM HEARTBURN RX (D560)	24	DRAMA/ADVNTN
A&E	WED	NOV 08 2006	08:48:54am	5	8	60 CYMBALTA RX (D560)	24	DRAMA/ADVNTN
A&E	WED	NOV 08 2006	09:51:49am	6	8	60 NEULASTA INFECTION RX (D560)	CITY CONFIDENTIAL	DRAMA/ADVNTN
A&E	WED	NOV 08 2006	11:08:12am	1	9	60 LUNESTA SLEEP RX (D560)	COLD CASE FILES	DOCUMENTARY
A&E	WED	NOV 08 2006	11:34:32am	6	10	60 LEVITRA ERECTILE DYSFUNCTION RX (D560)	COLD CASE FILES	DOCUMENTARY
A&E	WED	NOV 08 2006	01:26:43pm	2	8	60 CIALIS ERECTILE DYSFUNCTION RX (D560)	CSI: MIAMI	POLICE/SUSPENSE
A&E	WED	NOV 08 2006	02:37:30pm	4	8	60 NEXIUM HEARTBURN RX (D560)	24	DRAMA/ADVNTN
A&E	WED	NOV 08 2006	02:48:54pm	5	8	60 CYMBALTA RX (D560)	24	DRAMA/ADVNTN
A&E	WED	NOV 08 2006	03:51:49pm	6	8	60 NEULASTA INFECTION RX (D560)	CITY CONFIDENTIAL	DRAMA/ADVNTN
A&E	WED	NOV 08 2006	04:21:31pm	4	8	60 SPIRIVA HANDHALER RX (D560)	AMERICAN JUSTICE	POLICE/SUSPENSE
A&E	WED	NOV 08 2006	05:08:12pm	1	9	60 LUNESTA SLEEP RX (D560)	COLD CASE FILES	DOCUMENTARY
A&E	WED	NOV 08 2006	05:34:32pm	6	10	60 LEVITRA ERECTILE DYSFUNCTION RX (D560)	COLD CASE FILES	DOCUMENTARY
A&E	WED	NOV 08 2006	07:26:43pm	2	8	60 CIALIS ERECTILE DYSFUNCTION RX (D560)	CSI: MIAMI	POLICE/SUSPENSE
A&E	WED	NOV 08 2006	09:07:52pm	4	9	60 LEVITRA ERECTILE DYSFUNCTION RX (D560)	DOG THE BOUNTY HUNTER	SLICE-OF-LIFE
A&E	WED	NOV 08 2006	09:22:07pm	7	10	60 CRESTOR CHOLESTEROL RX (D560)	DOG THE BOUNTY HUNTER	SLICE-OF-LIFE
A&E	WED	NOV 08 2006	09:51:49pm	6	9	60 NEXIUM HEARTBURN RX (D560)	DOG THE BOUNTY HUNTER	SLICE-OF-LIFE
A&E	WED	NOV 08 2006	01:07:52X	4	9	60 LEVITRA ERECTILE DYSFUNCTION RX (D560)	DOG THE BOUNTY HUNTER	SLICE-OF-LIFE
A&E	WED	NOV 08 2006	01:22:07X	7	10	60 CRESTOR CHOLESTEROL RX (D560)	DOG THE BOUNTY HUNTER	SLICE-OF-LIFE
A&E	WED	NOV 08 2006	01:51:49X	6	9	60 NEXIUM HEARTBURN RX (D560)	DOG THE BOUNTY HUNTER	SLICE-OF-LIFE
A&E	THU	NOV 09 2006	08:25:05am	3	8	60 LUNESTA SLEEP RX (D560)	24	DRAMA/ADVNTN
A&E	THU	NOV 09 2006	09:22:32am	7	7	60 LUNESTA SLEEP RX (D560)	CITY CONFIDENTIAL	DRAMA/ADVNTN
A&E	THU	NOV 09 2006	09:28:20am	2	7	60 LUNESTA SLEEP RX (D560)	CITY CONFIDENTIAL	DRAMA/ADVNTN
A&E	THU	NOV 09 2006	10:34:31am	3	7	60 CYMBALTA RX (D560)	AMERICAN JUSTICE	POLICE/SUSPENSE
A&E	THU	NOV 09 2006	11:35:36am	6	8	60 ACTONEL OSTEOPOROSIS RX (D560)	COLD CASE FILES	DOCUMENTARY
A&E	THU	NOV 09 2006	12:33:59pm	9	10	60 CADUET RX (D560)	CROSSING JORDAN	DRAMA/ADVNTN
A&E	THU	NOV 09 2006	02:25:04pm	3	8	60 LUNESTA SLEEP RX (D560)	24	DRAMA/ADVNTN
A&E	THU	NOV 09 2006	03:22:32pm	7	7	60 LUNESTA SLEEP RX (D560)	CITY CONFIDENTIAL	DRAMA/ADVNTN
A&E	THU	NOV 09 2006	03:28:20pm	2	7	60 LUNESTA SLEEP RX (D560)	CITY CONFIDENTIAL	DRAMA/ADVNTN
A&E	THU	NOV 09 2006	04:34:31pm	3	7	60 CYMBALTA RX (D560)	AMERICAN JUSTICE	POLICE/SUSPENSE
A&E	THU	NOV 09 2006	05:35:36pm	6	8	60 ACTONEL OSTEOPOROSIS RX (D560)	COLD CASE FILES	DOCUMENTARY
A&E	THU	NOV 09 2006	06:05:13pm	8	9	60 SPIRIVA HANDHALER RX (D560)	CROSSING JORDAN	DRAMA/ADVNTN
A&E	THU	NOV 09 2006	06:33:59pm	9	10	60 CADUET RX (D560)	CROSSING JORDAN	DRAMA/ADVNTN
A&E	THU	NOV 09 2006	08:05:36pm	5	6	60 LUNESTA SLEEP RX (D560)	CSI: MIAMI	POLICE/SUSPENSE
A&E	THU	NOV 09 2006	08:41:36pm	4	8	60 NEXIUM HEARTBURN RX (D560)	CSI: MIAMI	POLICE/SUSPENSE
A&E	THU	NOV 09 2006	11:23:27pm	6	8	60 CIALIS ERECTILE DYSFUNCTION RX (D560)	COLD CASE FILES	DOCUMENTARY
A&E	THU	NOV 09 2006	12:05:36X	5	5	60 LUNESTA SLEEP RX (D560)	CSI: MIAMI	POLICE/SUSPENSE
A&E	THU	NOV 09 2006	12:41:36X	4	8	60 NEXIUM HEARTBURN RX (D560)	CSI: MIAMI	POLICE/SUSPENSE
A&E	THU	NOV 09 2006	03:23:27X	6	8	60 CIALIS ERECTILE DYSFUNCTION RX (D560)	COLD CASE FILES	DOCUMENTARY
A&E	FRI	NOV 10 2006	09:28:59am	4	8	60 CRESTOR CHOLESTEROL RX (D560)	CITY CONFIDENTIAL	DRAMA/ADVNTN
A&E	FRI	NOV 10 2006	10:23:20am	3	8	60 AMBIEN CR SLEEP RX (D560)	AMERICAN JUSTICE	POLICE/SUSPENSE
A&E	FRI	NOV 10 2006	12:04:48pm	6	9	60 AMBIEN CR SLEEP RX (D560)	CROSSING JORDAN	DRAMA/ADVNTN
A&E	FRI	NOV 10 2006	12:33:08pm	6	10	60 SPIRIVA HANDHALER RX (D560)	CROSSING JORDAN	DRAMA/ADVNTN
A&E	FRI	NOV 10 2006	01:31:22pm	7	9	60 CIALIS ERECTILE DYSFUNCTION RX (D560)	CSI: MIAMI	POLICE/SUSPENSE
A&E	FRI	NOV 10 2006	01:43:35pm	4	7	60 SPIRIVA HANDHALER RX (D560)	CSI: MIAMI	POLICE/SUSPENSE
A&E	FRI	NOV 10 2006	01:52:03pm	3	6	60 LUNESTA SLEEP RX (D560)	CSI: MIAMI	POLICE/SUSPENSE
A&E	FRI	NOV 10 2006	03:28:59pm	4	8	60 CRESTOR CHOLESTEROL RX (D560)	CITY CONFIDENTIAL	DRAMA/ADVNTN
A&E	FRI	NOV 10 2006	04:23:20pm	3	8	60 AMBIEN CR SLEEP RX (D560)	AMERICAN JUSTICE	POLICE/SUSPENSE
A&E	FRI	NOV 10 2006	06:04:48pm	6	9	60 AMBIEN CR SLEEP RX (D560)	CROSSING JORDAN	DRAMA/ADVNTN



A&E	FRI	NOV 10 2006	07:31:22pm	7	9	60 CIALIS ERECTILE DYSFUNCTION RX (D560)	CSI: MIAMI	POLICE/SUSPENSE
A&E	FRI	NOV 10 2006	07:52:03pm	3	7	60 LUNESTA SLEEP RX (D560)	CSI: MIAMI	POLICE/SUSPENSE
A&E	FRI	NOV 10 2006	10:16:23pm	3	10	30 NASONEX ALLERGY RX (D560)	CSI: MIAMI	POLICE/SUSPENSE
A&E	FRI	NOV 10 2006	11:06:10pm	6	8	60 NEULASTA INFECTION RX (D560)	CSI: MIAMI	POLICE/SUSPENSE
A&E	FRI	NOV 10 2006	11:18:45pm	5	8	30 NASONEX ALLERGY RX (D560)	CSI: MIAMI	POLICE/SUSPENSE
A&E	FRI	NOV 10 2006	11:49:39pm	4	6	60 CIALIS ERECTILE DYSFUNCTION RX (D560)	CSI: MIAMI	POLICE/SUSPENSE
A&E	FRI	NOV 10 2006	02:16:23X	3	10	30 NASONEX ALLERGY RX (D560)	CSI: MIAMI	POLICE/SUSPENSE
A&E	FRI	NOV 10 2006	03:06:10X	6	8	60 NEULASTA INFECTION RX (D560)	CSI: MIAMI	POLICE/SUSPENSE
A&E	FRI	NOV 10 2006	03:19:00X	6	8	30 NASONEX ALLERGY RX (D560)	CSI: MIAMI	POLICE/SUSPENSE
A&E	FRI	NOV 10 2006	03:49:39X	4	6	60 CIALIS ERECTILE DYSFUNCTION RX (D560)	CSI: MIAMI	POLICE/SUSPENSE
A&E	SAT	NOV 11 2006	07:22:53am	5	7	60 NEXIUM HEARTBURN RX (D560)	MURDER SHE WROTE	DRAMA/ADVNTN
A&E	SAT	NOV 11 2006	07:46:02am	3	6	60 LEVITRA ERECTILE DYSFUNCTION RX (D560)	MURDER SHE WROTE	DRAMA/ADVNTN
A&E	SAT	NOV 11 2006	08:25:35am	6	7	60 NEULASTA INFECTION RX (D560)	MURDER SHE WROTE	DRAMA/ADVNTN
A&E	SAT	NOV 11 2006	08:45:57am	4	7	60 LEVITRA ERECTILE DYSFUNCTION RX (D560)	MURDER SHE WROTE	DRAMA/ADVNTN
A&E	SAT	NOV 11 2006	09:12:06am	5	8	60 CIALIS ERECTILE DYSFUNCTION RX (D560)	BIOGRAPHY	DOCUMENTARY
A&E	SAT	NOV 11 2006	09:23:34am	7	9	60 CRESTOR CHOLESTEROL RX (D560)	BIOGRAPHY	DOCUMENTARY
A&E	SAT	NOV 11 2006	09:35:37am	7	11	60 BONIVA OSTEOPOROSIS RX (D560)	BIOGRAPHY	DOCUMENTARY
A&E	SAT	NOV 11 2006	10:08:27am	3	6	60 LEVITRA ERECTILE DYSFUNCTION RX (D560)	BIOGRAPHY	DOCUMENTARY
A&E	SAT	NOV 11 2006	10:18:17am	3	7	60 BONIVA OSTEOPOROSIS RX (D560)	BIOGRAPHY	DOCUMENTARY
A&E	SAT	NOV 11 2006	10:29:17am	4	7	60 NEULASTA INFECTION RX (D560)	BIOGRAPHY	DOCUMENTARY
A&E	SAT	NOV 11 2006	10:39:12am	4	5	60 LEVITRA ERECTILE DYSFUNCTION RX (D560)	BIOGRAPHY	DOCUMENTARY
A&E	SAT	NOV 11 2006	10:51:24am	3	5	60 NEXIUM HEARTBURN RX (D560)	BIOGRAPHY	DOCUMENTARY
A&E	SAT	NOV 11 2006	10:52:24am	4	5	60 BONIVA OSTEOPOROSIS RX (D560)	BIOGRAPHY	DOCUMENTARY
A&E	SAT	NOV 11 2006	11:49:54am	4	8	60 BONIVA OSTEOPOROSIS RX (D560)	AIRLINE	SLICE-OF-LIFE
A&E	SAT	NOV 11 2006	12:36:06pm	5	9	60 CYMBALTA RX (D560)	COMIC BOOK SUPERHEROES	DOCUMENTARY
A&E	SAT	NOV 11 2006	01:20:14pm	4	9	60 NEULASTA INFECTION RX (D560)	COMIC BOOK SUPERHEROES	DOCUMENTARY
A&E	SAT	NOV 11 2006	04:59:36pm	5	8	60 CRESTOR CHOLESTEROL RX (D560)	MEDIUMS: WE SEE DEAD PPL	DOCUMENTARY
A&E	SAT	NOV 11 2006	05:50:38pm	6	8	60 LEVITRA ERECTILE DYSFUNCTION RX (D560)	MEDIUMS: WE SEE DEAD PPL	DOCUMENTARY
A&E	SAT	NOV 11 2006	06:23:30pm	5	7	60 CIALIS ERECTILE DYSFUNCTION RX (D560)	PSYCHIC CHILDREN: THEIR	DOCUMENTARY
A&E	SAT	NOV 11 2006	08:34:27pm	3	9	60 CIALIS ERECTILE DYSFUNCTION RX (D560)	COLD CASE FILES	DOCUMENTARY
A&E	SAT	NOV 11 2006	09:32:38pm	4	7	60 CIALIS ERECTILE DYSFUNCTION RX (D560)	COLD CASE FILES	DOCUMENTARY
A&E	SAT	NOV 11 2006	10:14:03pm	6	8	60 ROZEREM SLEEP RX (D560)	FIRST 48	DOCUMENTARY
A&E	SAT	NOV 11 2006	11:07:30pm	2	9	60 ROZEREM SLEEP RX (D560)	AMERICAN JUSTICE	POLICE/SUSPENSE
A&E	SAT	NOV 11 2006	11:22:21pm	2	8	60 ROZEREM SLEEP RX (D560)	AMERICAN JUSTICE	POLICE/SUSPENSE
A&E	SAT	NOV 11 2006	11:35:40pm	2	8	60 ROZEREM SLEEP RX (D560)	AMERICAN JUSTICE	POLICE/SUSPENSE
A&E	SAT	NOV 11 2006	12:34:27X	3	9	60 CIALIS ERECTILE DYSFUNCTION RX (D560)	COLD CASE FILES	DOCUMENTARY
A&E	SAT	NOV 11 2006	01:32:38X	5	8	60 CIALIS ERECTILE DYSFUNCTION RX (D560)	COLD CASE FILES	DOCUMENTARY
A&E	SAT	NOV 11 2006	02:14:03X	6	8	60 ROZEREM SLEEP RX (D560)	FIRST 48	DOCUMENTARY
A&E	SAT	NOV 11 2006	03:07:30X	2	9	60 ROZEREM SLEEP RX (D560)	AMERICAN JUSTICE	POLICE/SUSPENSE
A&E	SAT	NOV 11 2006	03:22:21X	2	8	60 ROZEREM SLEEP RX (D560)	AMERICAN JUSTICE	POLICE/SUSPENSE
A&E	SAT	NOV 11 2006	03:35:40X	2	8	60 ROZEREM SLEEP RX (D560)	AMERICAN JUSTICE	POLICE/SUSPENSE
A&E	SUN	NOV 12 2006	07:49:05am	6	9	60 CIALIS ERECTILE DYSFUNCTION RX (D560)	ASK THIS OLD HOUSE	INSTRCTN/ADVICE
A&E	SUN	NOV 12 2006	09:00:59am	9	10	60 AMBIEN CR SLEEP RX (D560)	BREAKFAST WITH THE ARTS	VARIETY-GENERAL
A&E	SUN	NOV 12 2006	10:24:33am	2	9	60 CIALIS ERECTILE DYSFUNCTION RX (D560)	FIRM MOVIE	FEATURE FILM
A&E	SUN	NOV 12 2006	10:52:34am	8	10	60 BONIVA OSTEOPOROSIS RX (D560)	FIRM MOVIE	FEATURE FILM
A&E	SUN	NOV 12 2006	11:55:44am	11	11	60 LUNESTA SLEEP RX (D560)	FIRM MOVIE	FEATURE FILM
A&E	SUN	NOV 12 2006	12:25:00pm	7	11	60 LUNESTA SLEEP RX (D560)	FIRM MOVIE	FEATURE FILM
A&E	SUN	NOV 12 2006	01:19:28pm	5	10	60 CYMBALTA RX (D560)	GENE SIMMONS FAMILY JWLS	SLICE-OF-LIFE
A&E	SUN	NOV 12 2006	02:19:57pm	5	8	60 NEULASTA INFECTION RX (D560)	GENE SIMMONS FAMILY JWLS	SLICE-OF-LIFE
A&E	SUN	NOV 12 2006	03:22:12pm	8	9	60 LUNESTA SLEEP RX (D560)	SELL THIS HOUSE	INSTRCTN/ADVICE
A&E	SUN	NOV 12 2006	05:20:59pm	5	9	60 LUNESTA SLEEP RX (D560)	SELL THIS HOUSE	INSTRCTN/ADVICE
A&E	SUN	NOV 12 2006	06:20:07pm	3	8	60 LUNESTA SLEEP RX (D560)	SELL THIS HOUSE	INSTRCTN/ADVICE
A&E	SUN	NOV 12 2006	07:36:11pm	6	9	60 CRESTOR CHOLESTEROL RX (D560)	FLIP THIS HOUSE	INSTRCTN/ADVICE
A&E	SUN	NOV 12 2006	09:26:17pm	2	8	60 LUNESTA SLEEP RX (D560)	FIRST 48	DOCUMENTARY
A&E	SUN	NOV 12 2006	09:39:06pm	5	9	30 NASONEX ALLERGY RX (D560)	FIRST 48	DOCUMENTARY
A&E	SUN	NOV 12 2006	10:38:04pm	6	7	60 NEULASTA INFECTION RX (D560)	INTERVENTION	SLICE-OF-LIFE
A&E	SUN	NOV 12 2006	11:22:11pm	4	7	60 NEULASTA INFECTION RX (D560)	CRANK: MADE IN AMERICA	DOCUMENTARY
A&E	SUN	NOV 12 2006	11:34:56pm	6	8	30 NASONEX ALLERGY RX (D560)	CRANK: MADE IN AMERICA	DOCUMENTARY
A&E	SUN	NOV 12 2006	01:26:17X	2	9	60 LUNESTA SLEEP RX (D560)	FIRST 48	DOCUMENTARY
A&E	SUN	NOV 12 2006	01:39:06X	5	9	30 NASONEX ALLERGY RX (D560)	FIRST 48	DOCUMENTARY
A&E	SUN	NOV 12 2006	02:38:04X	6	7	60 NEULASTA INFECTION RX (D560)	INTERVENTION	SLICE-OF-LIFE
A&E	SUN	NOV 12 2006	03:22:11X	4	7	60 NEULASTA INFECTION RX (D560)	CRANK: MADE IN AMERICA	DOCUMENTARY
A&E	SUN	NOV 12 2006	03:34:56X	6	8	30 NASONEX ALLERGY RX (D560)	CRANK: MADE IN AMERICA	DOCUMENTARY
A&E	MON	NOV 13 2006	09:22:56am	2	8	60 SPIRIVA HANDIHALER RX (D560)	CITY CONFIDENTIAL	DRAMA/ADVNTN
A&E	MON	NOV 13 2006	10:22:01am	2	7	60 LUNESTA SLEEP RX (D560)	AMERICAN JUSTICE	POLICE/SUSPENSE
A&E	MON	NOV 13 2006	10:36:17am	4	9	60 AMBIEN CR SLEEP RX (D560)	AMERICAN JUSTICE	POLICE/SUSPENSE
A&E	MON	NOV 13 2006	11:24:26am	5	6	60 CYMBALTA RX (D560)	COLD CASE FILES	DOCUMENTARY
A&E	MON	NOV 13 2006	12:06:58pm	8	9	60 CYMBALTA RX (D560)	CROSSING JORDAN	DRAMA/ADVNTN
A&E	MON	NOV 13 2006	12:31:42pm	3	10	60 ROZEREM SLEEP RX (D560)	CROSSING JORDAN	DRAMA/ADVNTN
A&E	MON	NOV 13 2006	12:48:19pm	8	10	60 CYMBALTA RX (D560)	CROSSING JORDAN	DRAMA/ADVNTN
A&E	MON	NOV 13 2006	01:04:26pm	6	6	60 ROZEREM SLEEP RX (D560)	CSI: MIAMI	POLICE/SUSPENSE
A&E	MON	NOV 13 2006	01:52:15pm	6	6	60 NUVARING BIRTH CONTROL RX (D560)	CSI: MIAMI	POLICE/SUSPENSE
A&E	MON	NOV 13 2006	04:22:01pm	2	7	60 LUNESTA SLEEP RX (D560)	AMERICAN JUSTICE	POLICE/SUSPENSE
A&E	MON	NOV 13 2006	04:36:17pm	4	9	60 AMBIEN CR SLEEP RX (D560)	AMERICAN JUSTICE	POLICE/SUSPENSE
A&E	MON	NOV 13 2006	05:24:26pm	5	6	60 CYMBALTA RX (D560)	COLD CASE FILES	DOCUMENTARY
A&E	MON	NOV 13 2006	06:06:28pm	7	9	60 CYMBALTA RX (D560)	CROSSING JORDAN	DRAMA/ADVNTN
A&E	MON	NOV 13 2006	06:31:42pm	3	10	60 ROZEREM SLEEP RX (D560)	CROSSING JORDAN	DRAMA/ADVNTN
A&E	MON	NOV 13 2006	06:48:19pm	8	10	60 CYMBALTA RX (D560)	CROSSING JORDAN	DRAMA/ADVNTN
A&E	MON	NOV 13 2006	07:04:26pm	6	6	60 ROZEREM SLEEP RX (D560)	CSI: MIAMI	POLICE/SUSPENSE
A&E	MON	NOV 13 2006	07:52:15pm	6	6	60 NUVARING BIRTH CONTROL RX (D560)	CSI: MIAMI	POLICE/SUSPENSE
A&E	MON	NOV 13 2006	08:15:45pm	7	7	60 ZELNORM IBS RX (D560)	CSI: MIAMI	POLICE/SUSPENSE
A&E	MON	NOV 13 2006	08:50:30pm	6	6	60 ZELNORM IBS RX (D560)	CSI: MIAMI	POLICE/SUSPENSE
A&E	MON	NOV 13 2006	09:39:43pm	9	9	60 AMBIEN CR SLEEP RX (D560)	CSI: MIAMI	POLICE/SUSPENSE
A&E	MON	NOV 13 2006	10:51:51pm	7	8	60 LIPITOR CHOLESTEROL RX (D560)	GENE SIMMONS FAMILY JWLS	SLICE-OF-LIFE
A&E	MON	NOV 13 2006	11:04:57pm	4	5	60 NEULASTA INFECTION RX (D560)	CSI: MIAMI	POLICE/SUSPENSE
A&E	MON	NOV 13 2006	12:15:44X	7	7	60 ZELNORM IBS RX (D560)	CSI: MIAMI	POLICE/SUSPENSE
A&E	MON	NOV 13 2006	12:50:30X	7	7	60 ZELNORM IBS RX (D560)	CSI: MIAMI	POLICE/SUSPENSE
A&E	MON	NOV 13 2006	01:39:43X	9	9	60 AMBIEN CR SLEEP RX (D560)	CSI: MIAMI	POLICE/SUSPENSE
A&E	MON	NOV 13 2006	02:51:51X	7	8	60 LIPITOR CHOLESTEROL RX (D560)	GENE SIMMONS FAMILY JWLS	SLICE-OF-LIFE
A&E	MON	NOV 13 2006	03:04:57X	4	5	60 NEULASTA INFECTION RX (D560)	CSI: MIAMI	POLICE/SUSPENSE
A&E	TUE	NOV 14 2006	08:36:35am	4	10	60 CYMBALTA RX (D560)	24	DRAMA/ADVNTN
A&E	TUE	NOV 14 2006	10:52:51am	6	9	60 LUNESTA SLEEP RX (D560)	AMERICAN JUSTICE	POLICE/SUSPENSE
A&E	TUE	NOV 14 2006	12:34:22pm	8	11	60 CYMBALTA RX (D560)	CROSSING JORDAN	DRAMA/ADVNTN
A&E	TUE	NOV 14 2006	01:04:42pm	8	9	60 LUNESTA SLEEP RX (D560)	CSI: MIAMI	POLICE/SUSPENSE
A&E	TUE	NOV 14 2006	02:36:35pm	4	10	60 CYMBALTA RX (D560)	24	DRAMA/ADVNTN
A&E	TUE	NOV 14 2006	04:52:50pm	6	9	60 LUNESTA SLEEP RX (D560)	AMERICAN JUSTICE	POLICE/SUSPENSE
A&E	TUE	NOV 14 2006	06:34:22pm	8	11	60 CYMBALTA RX (D560)	CROSSING JORDAN	DRAMA/ADVNTN
A&E	TUE	NOV 14 2006	07:04:42pm	8	9	60 LUNESTA SLEEP RX (D560)	CSI: MIAMI	POLICE/SUSPENSE
A&E	TUE	NOV 14 2006	09:07:40pm	7	9	60 ZELNORM IBS RX (D560)	DOG THE BOUNTY HUNTER	SLICE-OF-LIFE
A&E	TUE	NOV 14 2006	09:20:24pm	7	10	60 NEULASTA INFECTION RX (D560)	DOG THE BOUNTY HUNTER	SLICE-OF-LIFE
A&E	TUE	NOV 14 2006	11:49:50pm	5	5	60 ZELNORM IBS RX (D560)	CSI: MIAMI	POLICE/SUSPENSE
A&E	TUE	NOV 14 2006	01:07:40X	7	9	60 ZELNORM IBS RX (D560)	DOG THE BOUNTY HUNTER	SLICE-OF-LIFE

A&E	TUE	NOV 14 2006	01:20:24X	8	12	60 NEULASTA INFECTION RX (D560)	DOG THE BOUNTY HUNTER	SLICE-OF-LIFE
A&E	TUE	NOV 14 2006	03:49:50X	5	5	60 ZELNORM IBS RX (D560)	CSI: MIAMI	POLICE/SUSPENSE
A&E	WED	NOV 15 2006	09:51:38am	4	7	60 CYMBALTA RX (D560)	CITY CONFIDENTIAL	DRAMA/ADVNTN
A&E	WED	NOV 15 2006	12:24:16pm	10	10	60 LUNESTA SLEEP RX (D560)	CROSSING JORDAN	DRAMA/ADVNTN
A&E	WED	NOV 15 2006	12:37:27pm	7	10	60 CYMBALTA RX (D560)	CROSSING JORDAN	DRAMA/ADVNTN
A&E	WED	NOV 15 2006	03:51:38pm	4	7	60 CYMBALTA RX (D560)	CITY CONFIDENTIAL	DRAMA/ADVNTN
A&E	WED	NOV 15 2006	06:24:16pm	10	10	60 LUNESTA SLEEP RX (D560)	CROSSING JORDAN	DRAMA/ADVNTN
A&E	WED	NOV 15 2006	06:37:27pm	7	10	60 CYMBALTA RX (D560)	CROSSING JORDAN	DRAMA/ADVNTN
A&E	WED	NOV 15 2006	07:28:15pm	3	8	60 SPIRIVA HANDIHALER RX (D560)	CSI: MIAMI	POLICE/SUSPENSE
A&E	WED	NOV 15 2006	08:47:56pm	8	8	60 ZELNORM IBS RX (D560)	CSI: MIAMI	POLICE/SUSPENSE
A&E	WED	NOV 15 2006	09:38:58pm	6	8	60 ZELNORM IBS RX (D560)	DOG THE BOUNTY HUNTER	SLICE-OF-LIFE
A&E	WED	NOV 15 2006	10:41:57pm	7	9	60 ZELNORM IBS RX (D560)	CRISS ANGEL MINDFREAK	VARIETY-GENERAL
A&E	WED	NOV 15 2006	11:10:21pm	7	8	60 ZELNORM IBS RX (D560)	CRISS ANGEL MINDFREAK	VARIETY-GENERAL
A&E	WED	NOV 15 2006	12:47:56X	8	8	60 ZELNORM IBS RX (D560)	CSI: MIAMI	POLICE/SUSPENSE
A&E	WED	NOV 15 2006	01:38:58X	6	8	60 ZELNORM IBS RX (D560)	DOG THE BOUNTY HUNTER	SLICE-OF-LIFE
A&E	WED	NOV 15 2006	02:41:57X	7	9	60 ZELNORM IBS RX (D560)	CRISS ANGEL MINDFREAK	VARIETY-GENERAL
A&E	WED	NOV 15 2006	03:10:21X	7	9	60 ZELNORM IBS RX (D560)	CRISS ANGEL MINDFREAK	VARIETY-GENERAL
A&E	THU	NOV 16 2006	08:16:32am	6	8	60 SPIRIVA HANDIHALER RX (D560)	24	DRAMA/ADVNTN
A&E	THU	NOV 16 2006	08:27:28am	6	7	60 CRESTOR CHOLESTEROL RX (D560)	24	DRAMA/ADVNTN
A&E	THU	NOV 16 2006	09:04:09am	8	8	60 LUNESTA SLEEP RX (D560)	CITY CONFIDENTIAL	DRAMA/ADVNTN
A&E	THU	NOV 16 2006	10:21:13am	2	8	60 SPIRIVA HANDIHALER RX (D560)	AMERICAN JUSTICE	POLICE/SUSPENSE
A&E	THU	NOV 16 2006	10:36:05am	3	9	60 AMBIEN CR SLEEP RX (D560)	AMERICAN JUSTICE	POLICE/SUSPENSE
A&E	THU	NOV 16 2006	11:19:54am	3	8	60 LUNESTA SLEEP RX (D560)	COLD CASE FILES	DOCUMENTARY
A&E	THU	NOV 16 2006	11:47:26am	3	5	60 NEULASTA INFECTION RX (D560)	COLD CASE FILES	DOCUMENTARY
A&E	THU	NOV 16 2006	12:05:36pm	9	10	60 LUNESTA SLEEP RX (D560)	CROSSING JORDAN	DRAMA/ADVNTN
A&E	THU	NOV 16 2006	01:05:28pm	6	7	60 NUVARING BIRTH CONTROL RX (D560)	CSI: MIAMI	POLICE/SUSPENSE
A&E	THU	NOV 16 2006	02:16:32pm	6	8	60 SPIRIVA HANDIHALER RX (D560)	24	DRAMA/ADVNTN
A&E	THU	NOV 16 2006	02:27:28pm	6	7	60 CRESTOR CHOLESTEROL RX (D560)	24	DRAMA/ADVNTN
A&E	THU	NOV 16 2006	03:04:09pm	8	8	60 LUNESTA SLEEP RX (D560)	CITY CONFIDENTIAL	DRAMA/ADVNTN
A&E	THU	NOV 16 2006	04:21:13pm	2	8	60 SPIRIVA HANDIHALER RX (D560)	AMERICAN JUSTICE	POLICE/SUSPENSE
A&E	THU	NOV 16 2006	04:36:05pm	3	9	60 AMBIEN CR SLEEP RX (D560)	AMERICAN JUSTICE	POLICE/SUSPENSE
A&E	THU	NOV 16 2006	05:19:55pm	3	8	60 LUNESTA SLEEP RX (D560)	COLD CASE FILES	DOCUMENTARY
A&E	THU	NOV 16 2006	05:47:26pm	3	5	60 NEULASTA INFECTION RX (D560)	COLD CASE FILES	DOCUMENTARY
A&E	THU	NOV 16 2006	06:05:36pm	9	10	60 LUNESTA SLEEP RX (D560)	CROSSING JORDAN	DRAMA/ADVNTN
A&E	THU	NOV 16 2006	07:05:28pm	6	7	60 NUVARING BIRTH CONTROL RX (D560)	CSI: MIAMI	POLICE/SUSPENSE
A&E	THU	NOV 16 2006	08:29:57pm	4	7	60 LIPITOR CHOLESTEROL RX (D560)	CSI: MIAMI	POLICE/SUSPENSE
A&E	THU	NOV 16 2006	08:49:52pm	4	6	60 AMBIEN CR SLEEP RX (D560)	CSI: MIAMI	POLICE/SUSPENSE
A&E	THU	NOV 16 2006	12:18:18X	7	7	60 ZELNORM IBS RX (D560)	CSI: MIAMI	POLICE/SUSPENSE
A&E	THU	NOV 16 2006	12:29:57X	4	7	60 LIPITOR CHOLESTEROL RX (D560)	CSI: MIAMI	POLICE/SUSPENSE
A&E	THU	NOV 16 2006	12:49:52X	4	6	60 AMBIEN CR SLEEP RX (D560)	CSI: MIAMI	POLICE/SUSPENSE
A&E	FRI	NOV 17 2006	08:35:03am	7	11	60 NUVARING BIRTH CONTROL RX (D560)	24	DRAMA/ADVNTN
A&E	FRI	NOV 17 2006	09:24:42am	4	6	60 NEULASTA INFECTION RX (D560)	CITY CONFIDENTIAL	DRAMA/ADVNTN
A&E	FRI	NOV 17 2006	10:08:50am	1	8	60 SPIRIVA HANDIHALER RX (D560)	AMERICAN JUSTICE	POLICE/SUSPENSE
A&E	FRI	NOV 17 2006	10:23:46am	8	8	60 AMBIEN CR SLEEP RX (D560)	AMERICAN JUSTICE	POLICE/SUSPENSE
A&E	FRI	NOV 17 2006	10:35:44am	4	8	60 CRESTOR CHOLESTEROL RX (D560)	AMERICAN JUSTICE	POLICE/SUSPENSE
A&E	FRI	NOV 17 2006	12:05:20pm	4	9	60 ROZEREM SLEEP RX (D560)	CROSSING JORDAN	DRAMA/ADVNTN
A&E	FRI	NOV 17 2006	02:35:03pm	7	11	60 NUVARING BIRTH CONTROL RX (D560)	24	DRAMA/ADVNTN
A&E	FRI	NOV 17 2006	03:24:42pm	4	6	60 NEULASTA INFECTION RX (D560)	CITY CONFIDENTIAL	DRAMA/ADVNTN
A&E	FRI	NOV 17 2006	04:08:50pm	1	8	60 SPIRIVA HANDIHALER RX (D560)	AMERICAN JUSTICE	POLICE/SUSPENSE
A&E	FRI	NOV 17 2006	04:23:46pm	8	8	60 AMBIEN CR SLEEP RX (D560)	AMERICAN JUSTICE	POLICE/SUSPENSE
A&E	FRI	NOV 17 2006	04:35:44pm	4	8	60 CRESTOR CHOLESTEROL RX (D560)	AMERICAN JUSTICE	POLICE/SUSPENSE
A&E	FRI	NOV 17 2006	06:05:20pm	4	9	60 ROZEREM SLEEP RX (D560)	CROSSING JORDAN	DRAMA/ADVNTN
A&E	FRI	NOV 17 2006	02:17:35X	5	5	60 ZELNORM IBS RX (D560)	CSI: MIAMI	POLICE/SUSPENSE
A&E	SAT	NOV 18 2006	07:27:26am	6	7	60 CYMBALTA RX (D560)	MURDER SHE WROTE	DRAMA/ADVNTN
A&E	SAT	NOV 18 2006	07:41:12am	4	9	60 CRESTOR CHOLESTEROL RX (D560)	MURDER SHE WROTE	DRAMA/ADVNTN
A&E	SAT	NOV 18 2006	07:53:11am	6	7	60 NEULASTA INFECTION RX (D560)	MURDER SHE WROTE	DRAMA/ADVNTN
A&E	SAT	NOV 18 2006	08:27:14am	4	7	60 CYMBALTA RX (D560)	MURDER SHE WROTE	DRAMA/ADVNTN
A&E	SAT	NOV 18 2006	10:27:44am	6	7	60 BONIVA OSTEOPOROSIS RX (D560)	BIOGRAPHY	DOCUMENTARY
A&E	SAT	NOV 18 2006	10:51:19am	6	7	60 NEULASTA INFECTION RX (D560)	BIOGRAPHY	DOCUMENTARY
A&E	SAT	NOV 18 2006	11:36:33am	4	9	60 BONIVA OSTEOPOROSIS RX (D560)	RFK	FEATURE FILM
A&E	SAT	NOV 18 2006	12:06:25pm	9	10	60 ZELNORM IBS RX (D560)	RFK	FEATURE FILM
A&E	SAT	NOV 18 2006	12:20:38pm	2	7	60 ROZEREM SLEEP RX (D560)	RFK	FEATURE FILM
A&E	SAT	NOV 18 2006	01:14:07pm	6	7	60 ZELNORM IBS RX (D560)	COPYCAT CRIMES	POLICE/SUSPENSE
A&E	SAT	NOV 18 2006	01:48:19pm	2	7	60 CYMBALTA RX (D560)	COPYCAT CRIMES	POLICE/SUSPENSE
A&E	SAT	NOV 18 2006	02:12:53pm	5	7	60 ZELNORM IBS RX (D560)	DARK SIDE OF PAROLE	DOCUMENTARY
A&E	SAT	NOV 18 2006	02:24:38pm	4	6	60 NEULASTA INFECTION RX (D560)	DARK SIDE OF PAROLE	DOCUMENTARY
A&E	SAT	NOV 18 2006	02:50:00pm	1	4	60 NUVARING BIRTH CONTROL RX (D560)	DARK SIDE OF PAROLE	DOCUMENTARY
A&E	SAT	NOV 18 2006	03:11:46pm	2	9	60 NEULASTA INFECTION RX (D560)	ROAD WARRIORS: BIKER BRO	UNCLASSIFIED
A&E	SAT	NOV 18 2006	03:52:27pm	9	9	60 CRESTOR CHOLESTEROL RX (D560)	ROAD WARRIORS: BIKER BRO	UNCLASSIFIED
A&E	SAT	NOV 18 2006	04:13:03pm	6	8	60 ZELNORM IBS RX (D560)	PARKING WARS	SLICE-OF-LIFE
A&E	SAT	NOV 18 2006	06:46:46pm	3	6	60 CYMBALTA RX (D560)	FIRST 48	DOCUMENTARY
A&E	SAT	NOV 18 2006	07:03:35pm	4	6	60 NEULASTA INFECTION RX (D560)	FIRST 48	DOCUMENTARY
A&E	SAT	NOV 18 2006	09:21:56pm	2	8	60 ROZEREM SLEEP RX (D560)	COLD CASE FILES	DOCUMENTARY
A&E	SAT	NOV 18 2006	11:21:36pm	6	9	60 ROZEREM SLEEP RX (D560)	AMERICAN JUSTICE	POLICE/SUSPENSE
A&E	SAT	NOV 18 2006	11:36:49pm	6	7	60 AMBIEN CR SLEEP RX (D560)	AMERICAN JUSTICE	POLICE/SUSPENSE
A&E	SAT	NOV 18 2006	01:21:56X	2	8	60 ROZEREM SLEEP RX (D560)	COLD CASE FILES	DOCUMENTARY
A&E	SAT	NOV 18 2006	03:21:36X	6	9	60 ROZEREM SLEEP RX (D560)	AMERICAN JUSTICE	POLICE/SUSPENSE
A&E	SAT	NOV 18 2006	03:36:29X	6	8	60 AMBIEN CR SLEEP RX (D560)	AMERICAN JUSTICE	POLICE/SUSPENSE
A&E	SUN	NOV 19 2006	07:19:43am	2	7	60 LUNESTA SLEEP RX (D560)	INSIDE THIS OLD HOUSE	INSTRCTN/ADVICE
A&E	SUN	NOV 19 2006	08:44:56am	7	10	60 LUNESTA SLEEP RX (D560)	BREAKFAST WITH THE ARTS	VARIETY-GENERAL
A&E	SUN	NOV 19 2006	09:01:53am	8	9	60 LUNESTA SLEEP RX (D560)	BREAKFAST WITH THE ARTS	VARIETY-GENERAL
A&E	SUN	NOV 19 2006	10:11:52am	3	9	60 LUNESTA SLEEP RX (D560)	24	DRAMA/ADVNTN
A&E	SUN	NOV 19 2006	10:26:50am	9	9	60 LUNESTA SLEEP RX (D560)	24	DRAMA/ADVNTN
A&E	SUN	NOV 19 2006	10:50:40am	5	8	60 CRESTOR CHOLESTEROL RX (D560)	24	DRAMA/ADVNTN
A&E	SUN	NOV 19 2006	12:36:42pm	8	11	60 CRESTOR CHOLESTEROL RX (D560)	24	DRAMA/ADVNTN
A&E	SUN	NOV 19 2006	12:48:07pm	9	9	60 ZELNORM IBS RX (D560)	24	DRAMA/ADVNTN
A&E	SUN	NOV 19 2006	01:53:10pm	9	10	60 BONIVA OSTEOPOROSIS RX (D560)	PHILADELPHIA	FEATURE FILM
A&E	SUN	NOV 19 2006	02:45:58pm	9	10	60 ZELNORM IBS RX (D560)	PHILADELPHIA	FEATURE FILM
A&E	SUN	NOV 19 2006	03:40:06pm	6	9	60 ZELNORM IBS RX (D560)	SELL THIS HOUSE	INSTRCTN/ADVICE
A&E	SUN	NOV 19 2006	04:11:29pm	6	8	60 ZELNORM IBS RX (D560)	FIND & DESIGN	INSTRCTN/ADVICE
A&E	SUN	NOV 19 2006	05:42:38pm	7	9	60 ZELNORM IBS RX (D560)	BIG SPENDER/CABLE	SLICE-OF-LIFE
A&E	SUN	NOV 19 2006	06:09:13pm	2	7	60 LUNESTA SLEEP RX (D560)	SELL THIS HOUSE	INSTRCTN/ADVICE
A&E	SUN	NOV 19 2006	07:50:18pm	6	9	60 NEULASTA INFECTION RX (D560)	FLIP THIS HOUSE	INSTRCTN/ADVICE
A&E	SUN	NOV 19 2006	08:25:46pm	8	9	30 NASONEX ALLERGY RX (D560)	FLIP THIS HOUSE	INSTRCTN/ADVICE
A&E	SUN	NOV 19 2006	08:49:55pm	5	7	60 CRESTOR CHOLESTEROL RX (D560)	FLIP THIS HOUSE	INSTRCTN/ADVICE
A&E	SUN	NOV 19 2006	09:23:41pm	7	9	30 NASONEX ALLERGY RX (D560)	FLIP THIS HOUSE	INSTRCTN/ADVICE
A&E	SUN	NOV 19 2006	09:33:04pm	5	9	60 CRESTOR CHOLESTEROL RX (D560)	FLIP THIS HOUSE	INSTRCTN/ADVICE
A&E	SUN	NOV 19 2006	10:35:09pm	5	8	30 NASONEX ALLERGY RX (D560)	INTERVENTION	SLICE-OF-LIFE
A&E	SUN	NOV 19 2006	11:28:23pm	4	7	30 NASONEX ALLERGY RX (D560)	INTERVENTION	SLICE-OF-LIFE
A&E	SUN	NOV 19 2006	11:38:06pm	3	7	60 NEULASTA INFECTION RX (D560)	INTERVENTION	SLICE-OF-LIFE
A&E	SUN	NOV 19 2006	11:50:58pm	6	8	30 NASONEX ALLERGY RX (D560)	INTERVENTION	SLICE-OF-LIFE
A&E	SUN	NOV 19 2006	12:25:47X	8	9	30 NASONEX ALLERGY RX (D560)	FLIP THIS HOUSE	INSTRCTN/ADVICE

A&E	SUN	NOV 19 2006	12:49:55X	5	8	60 CRESTOR CHOLESTEROL RX (D560)	FLIP THIS HOUSE	INSTRCTN/ADVICE
A&E	SUN	NOV 19 2006	01:23:41X	7	9	30 NASONEX ALLERGY RX (D560)	FLIP THIS HOUSE	INSTRCTN/ADVICE
A&E	SUN	NOV 19 2006	01:33:04X	5	9	60 CRESTOR CHOLESTEROL RX (D560)	FLIP THIS HOUSE	INSTRCTN/ADVICE
A&E	SUN	NOV 19 2006	02:35:08X	5	8	30 NASONEX ALLERGY RX (D560)	INTERVENTION	SLICE-OF-LIFE
A&E	SUN	NOV 19 2006	03:28:23X	4	7	30 NASONEX ALLERGY RX (D560)	INTERVENTION	SLICE-OF-LIFE
A&E	SUN	NOV 19 2006	03:38:06X	3	7	60 NEULASTA INFECTION RX (D560)	INTERVENTION	SLICE-OF-LIFE
A&E	SUN	NOV 19 2006	03:50:58X	6	8	30 NASONEX ALLERGY RX (D560)	INTERVENTION	SLICE-OF-LIFE
A&E	MON	NOV 20 2006	08:13:02am	1	7	60 AMBIEN CR SLEEP RX (D560)	24	DRAMA/ADVNTN
A&E	MON	NOV 20 2006	08:26:41am	5	7	60 CYMBALTA RX (D560)	24	DRAMA/ADVNTN
A&E	MON	NOV 20 2006	08:50:28am	7	10	60 AMBIEN CR SLEEP RX (D560)	24	DRAMA/ADVNTN
A&E	MON	NOV 20 2006	09:23:42am	7	7	60 ACTONEL OSTEOPOROSIS RX (D560)	CITY CONFIDENTIAL	DRAMA/ADVNTN
A&E	MON	NOV 20 2006	09:35:48am	5	7	60 NUVARING BIRTH CONTROL RX (D560)	CITY CONFIDENTIAL	DRAMA/ADVNTN
A&E	MON	NOV 20 2006	10:24:55am	6	8	60 CYMBALTA RX (D560)	AMERICAN JUSTICE	POLICE/SUSPENSE
A&E	MON	NOV 20 2006	10:34:25am	4	8	60 NEULASTA INFECTION RX (D560)	AMERICAN JUSTICE	POLICE/SUSPENSE
A&E	MON	NOV 20 2006	11:34:59am	5	8	60 CYMBALTA RX (D560)	COLD CASE FILES	DOCUMENTARY
A&E	MON	NOV 20 2006	01:50:45pm	4	7	60 NUVARING BIRTH CONTROL RX (D560)	CSI: MIAMI	POLICE/SUSPENSE
A&E	MON	NOV 20 2006	02:13:02pm	1	8	60 AMBIEN CR SLEEP RX (D560)	24	DRAMA/ADVNTN
A&E	MON	NOV 20 2006	02:26:41pm	5	7	60 CYMBALTA RX (D560)	24	DRAMA/ADVNTN
A&E	MON	NOV 20 2006	02:50:28pm	7	10	60 AMBIEN CR SLEEP RX (D560)	24	DRAMA/ADVNTN
A&E	MON	NOV 20 2006	03:23:42pm	7	7	60 ACTONEL OSTEOPOROSIS RX (D560)	CITY CONFIDENTIAL	DRAMA/ADVNTN
A&E	MON	NOV 20 2006	03:35:48pm	5	7	60 NUVARING BIRTH CONTROL RX (D560)	CITY CONFIDENTIAL	DRAMA/ADVNTN
A&E	MON	NOV 20 2006	04:24:55pm	6	8	60 CYMBALTA RX (D560)	AMERICAN JUSTICE	POLICE/SUSPENSE
A&E	MON	NOV 20 2006	04:34:25pm	4	8	60 NEULASTA INFECTION RX (D560)	AMERICAN JUSTICE	POLICE/SUSPENSE
A&E	MON	NOV 20 2006	05:34:59pm	5	8	60 CYMBALTA RX (D560)	COLD CASE FILES	DOCUMENTARY
A&E	MON	NOV 20 2006	07:50:45pm	5	8	60 NUVARING BIRTH CONTROL RX (D560)	CSI: MIAMI	POLICE/SUSPENSE
A&E	MON	NOV 20 2006	09:32:44pm	5	5	60 LIPITOR CHOLESTEROL RX (D560)	CSI: MIAMI	POLICE/SUSPENSE
A&E	MON	NOV 20 2006	01:32:44X	5	5	60 LIPITOR CHOLESTEROL RX (D560)	CSI: MIAMI	POLICE/SUSPENSE
A&E	TUE	NOV 21 2006	08:26:23am	7	7	60 AMBIEN CR SLEEP RX (D560)	24	DRAMA/ADVNTN
A&E	TUE	NOV 21 2006	09:22:15am	4	6	60 CADUET RX (D560)	CITY CONFIDENTIAL	DRAMA/ADVNTN
A&E	TUE	NOV 21 2006	09:30:14am	1	6	60 CYMBALTA RX (D560)	CITY CONFIDENTIAL	DRAMA/ADVNTN
A&E	TUE	NOV 21 2006	09:52:36am	6	6	60 SPIRIVA HANDIHALER RX (D560)	CITY CONFIDENTIAL	DRAMA/ADVNTN
A&E	TUE	NOV 21 2006	11:33:58am	2	9	60 CYMBALTA RX (D560)	COLD CASE FILES	DOCUMENTARY
A&E	TUE	NOV 21 2006	12:20:55pm	2	8	60 SPIRIVA HANDIHALER RX (D560)	CROSSING JORDAN	DRAMA/ADVNTN
A&E	TUE	NOV 21 2006	12:22:55pm	6	8	60 AMBIEN CR SLEEP RX (D560)	CROSSING JORDAN	DRAMA/ADVNTN
A&E	TUE	NOV 21 2006	01:05:00pm	6	7	60 CYMBALTA RX (D560)	CSI: MIAMI	POLICE/SUSPENSE
A&E	TUE	NOV 21 2006	02:26:23pm	7	7	60 AMBIEN CR SLEEP RX (D560)	24	DRAMA/ADVNTN
A&E	TUE	NOV 21 2006	03:30:14pm	1	6	60 CYMBALTA RX (D560)	CITY CONFIDENTIAL	DRAMA/ADVNTN
A&E	TUE	NOV 21 2006	03:52:36pm	6	6	60 SPIRIVA HANDIHALER RX (D560)	CITY CONFIDENTIAL	DRAMA/ADVNTN
A&E	TUE	NOV 21 2006	05:33:58pm	2	9	60 CYMBALTA RX (D560)	COLD CASE FILES	DOCUMENTARY
A&E	TUE	NOV 21 2006	06:22:55pm	5	7	60 AMBIEN CR SLEEP RX (D560)	CROSSING JORDAN	DRAMA/ADVNTN
A&E	TUE	NOV 21 2006	07:05:00pm	6	7	60 CYMBALTA RX (D560)	CSI: MIAMI	POLICE/SUSPENSE
A&E	TUE	NOV 21 2006	08:27:53pm	6	7	60 NUVARING BIRTH CONTROL RX (D560)	CSI: MIAMI	POLICE/SUSPENSE
A&E	TUE	NOV 21 2006	12:27:53X	6	7	60 NUVARING BIRTH CONTROL RX (D560)	CSI: MIAMI	POLICE/SUSPENSE
A&E	WED	NOV 22 2006	09:35:58am	3	9	60 NEULASTA INFECTION RX (D560)	AMERICAN JUSTICE	POLICE/SUSPENSE
A&E	WED	NOV 22 2006	11:21:31am	3	7	60 ACTONEL OSTEOPOROSIS RX (D560)	AMERICAN JUSTICE	POLICE/SUSPENSE
A&E	WED	NOV 22 2006	11:46:33am	6	8	60 AMBIEN CR SLEEP RX (D560)	AMERICAN JUSTICE	POLICE/SUSPENSE
A&E	WED	NOV 22 2006	03:35:57pm	3	9	60 NEULASTA INFECTION RX (D560)	AMERICAN JUSTICE	POLICE/SUSPENSE
A&E	WED	NOV 22 2006	05:21:31pm	3	7	60 ACTONEL OSTEOPOROSIS RX (D560)	AMERICAN JUSTICE	POLICE/SUSPENSE
A&E	WED	NOV 22 2006	05:46:33pm	6	8	60 AMBIEN CR SLEEP RX (D560)	AMERICAN JUSTICE	POLICE/SUSPENSE
A&E	WED	NOV 22 2006	09:52:22pm	5	7	60 CRESTOR CHOLESTEROL RX (D560)	CSI: MIAMI	POLICE/SUSPENSE
A&E	WED	NOV 22 2006	10:27:08pm	6	8	60 CRESTOR CHOLESTEROL RX (D560)	CSI: MIAMI	POLICE/SUSPENSE
A&E	WED	NOV 22 2006	01:52:22X	5	7	60 CRESTOR CHOLESTEROL RX (D560)	CSI: MIAMI	POLICE/SUSPENSE
A&E	WED	NOV 22 2006	02:27:08X	6	8	60 CRESTOR CHOLESTEROL RX (D560)	CSI: MIAMI	POLICE/SUSPENSE
A&E	THU	NOV 23 2006	08:21:18am	2	7	60 AMBIEN CR SLEEP RX (D560)	COLD CASE FILES	DOCUMENTARY
A&E	THU	NOV 23 2006	09:20:24am	2	9	60 AMBIEN CR SLEEP RX (D560)	COLD CASE FILES	DOCUMENTARY
A&E	THU	NOV 23 2006	09:45:48am	3	7	60 AMBIEN CR SLEEP RX (D560)	COLD CASE FILES	DOCUMENTARY
A&E	THU	NOV 23 2006	10:19:29am	4	8	60 AMBIEN CR SLEEP RX (D560)	INVESTIGATIVE REPORT	NEWS SPCL EVENT
A&E	THU	NOV 23 2006	10:32:41am	3	8	60 AMBIEN CR SLEEP RX (D560)	INVESTIGATIVE REPORT	NEWS SPCL EVENT
A&E	THU	NOV 23 2006	10:34:11am	5	8	60 CRESTOR CHOLESTEROL RX (D560)	INVESTIGATIVE REPORT	NEWS SPCL EVENT
A&E	THU	NOV 23 2006	01:25:24pm	9	9	60 AMBIEN CR SLEEP RX (D560)	COLD CASE FILES	DOCUMENTARY
A&E	THU	NOV 23 2006	02:23:14pm	2	7	60 AMBIEN CR SLEEP RX (D560)	COLD CASE FILES	DOCUMENTARY
A&E	THU	NOV 23 2006	03:21:48pm	2	9	60 AMBIEN CR SLEEP RX (D560)	COLD CASE FILES	DOCUMENTARY
A&E	THU	NOV 23 2006	03:46:58pm	3	7	60 AMBIEN CR SLEEP RX (D560)	COLD CASE FILES	DOCUMENTARY
A&E	THU	NOV 23 2006	04:21:52pm	4	8	60 AMBIEN CR SLEEP RX (D560)	INVESTIGATIVE REPORT	NEWS SPCL EVENT
A&E	THU	NOV 23 2006	04:32:56pm	2	7	60 AMBIEN CR SLEEP RX (D560)	INVESTIGATIVE REPORT	NEWS SPCL EVENT
A&E	THU	NOV 23 2006	04:34:26pm	4	7	60 CRESTOR CHOLESTEROL RX (D560)	INVESTIGATIVE REPORT	NEWS SPCL EVENT
A&E	THU	NOV 23 2006	07:23:32pm	9	10	60 AMBIEN CR SLEEP RX (D560)	COLD CASE FILES	DOCUMENTARY
A&E	FRI	NOV 24 2006	08:05:08am	5	7	60 SPIRIVA HANDIHALER RX (D560)	CSI: MIAMI	POLICE/SUSPENSE
A&E	FRI	NOV 24 2006	10:48:29am	3	7	60 SPIRIVA HANDIHALER RX (D560)	CSI: MIAMI	POLICE/SUSPENSE
A&E	FRI	NOV 24 2006	11:03:09am	2	7	60 CADUET RX (D560)	CSI: MIAMI	POLICE/SUSPENSE
A&E	FRI	NOV 24 2006	11:25:24am	3	7	60 CRESTOR CHOLESTEROL RX (D560)	CSI: MIAMI	POLICE/SUSPENSE
A&E	FRI	NOV 24 2006	11:41:26am	3	7	60 CADUET RX (D560)	CSI: MIAMI	POLICE/SUSPENSE
A&E	FRI	NOV 24 2006	02:04:30pm	5	6	60 SPIRIVA HANDIHALER RX (D560)	CSI: MIAMI	POLICE/SUSPENSE
A&E	FRI	NOV 24 2006	04:48:50pm	3	6	60 SPIRIVA HANDIHALER RX (D560)	CSI: MIAMI	POLICE/SUSPENSE
A&E	FRI	NOV 24 2006	05:05:06pm	2	6	60 CADUET RX (D560)	CSI: MIAMI	POLICE/SUSPENSE
A&E	FRI	NOV 24 2006	05:31:21pm	2	6	60 CRESTOR CHOLESTEROL RX (D560)	CSI: MIAMI	POLICE/SUSPENSE
A&E	FRI	NOV 24 2006	05:39:25pm	3	6	60 CADUET RX (D560)	CSI: MIAMI	POLICE/SUSPENSE
A&E	FRI	NOV 24 2006	08:51:04pm	5	7	60 CRESTOR CHOLESTEROL RX (D560)	CSI: MIAMI	POLICE/SUSPENSE
A&E	FRI	NOV 24 2006	09:25:26pm	5	5	60 CADUET RX (D560)	CSI: MIAMI	POLICE/SUSPENSE
A&E	FRI	NOV 24 2006	09:33:37pm	2	6	60 LIPITOR CHOLESTEROL RX (D560)	CSI: MIAMI	POLICE/SUSPENSE
A&E	FRI	NOV 24 2006	10:31:32pm	5	7	60 CRESTOR CHOLESTEROL RX (D560)	CSI: MIAMI	POLICE/SUSPENSE
A&E	FRI	NOV 24 2006	10:51:39pm	3	6	60 NEULASTA INFECTION RX (D560)	CSI: MIAMI	POLICE/SUSPENSE
A&E	FRI	NOV 24 2006	12:51:04X	5	7	60 CRESTOR CHOLESTEROL RX (D560)	CSI: MIAMI	POLICE/SUSPENSE
A&E	FRI	NOV 24 2006	01:25:26X	6	6	60 CADUET RX (D560)	CSI: MIAMI	POLICE/SUSPENSE
A&E	FRI	NOV 24 2006	01:33:37X	2	6	60 LIPITOR CHOLESTEROL RX (D560)	CSI: MIAMI	POLICE/SUSPENSE
A&E	FRI	NOV 24 2006	02:31:32X	5	7	60 CRESTOR CHOLESTEROL RX (D560)	CSI: MIAMI	POLICE/SUSPENSE
A&E	FRI	NOV 24 2006	02:51:39X	3	6	60 NEULASTA INFECTION RX (D560)	CSI: MIAMI	POLICE/SUSPENSE
A&E	SAT	NOV 25 2006	07:17:28am	6	9	60 CRESTOR CHOLESTEROL RX (D560)	MURDER SHE WROTE	DRAMA/ADVNTN
A&E	SAT	NOV 25 2006	07:28:29am	4	7	60 NEULASTA INFECTION RX (D560)	MURDER SHE WROTE	DRAMA/ADVNTN
A&E	SAT	NOV 25 2006	08:27:33am	6	7	60 NEULASTA INFECTION RX (D560)	MURDER SHE WROTE	DRAMA/ADVNTN
A&E	SAT	NOV 25 2006	09:49:10am	2	4	60 BONIVA OSTEOPOROSIS RX (D560)	BIOGRAPHY	DOCUMENTARY
A&E	SAT	NOV 25 2006	10:32:55am	1	3	60 AMBIEN CR SLEEP RX (D560)	BIOGRAPHY	DOCUMENTARY
A&E	SAT	NOV 25 2006	11:12:12am	4	8	60 BONIVA OSTEOPOROSIS RX (D560)	BILL COSBY	UNCLASSIFIED
A&E	SAT	NOV 25 2006	11:52:08am	7	7	60 BONIVA OSTEOPOROSIS RX (D560)	BILL COSBY	UNCLASSIFIED
A&E	SAT	NOV 25 2006	12:11:43pm	5	10	60 CRESTOR CHOLESTEROL RX (D560)	BIOGRAPHY	DOCUMENTARY
A&E	SAT	NOV 25 2006	12:32:38pm	4	10	60 AMBIEN CR SLEEP RX (D560)	BIOGRAPHY	DOCUMENTARY
A&E	SAT	NOV 25 2006	12:44:08pm	5	8	60 CYMBALTA RX (D560)	BIOGRAPHY	DOCUMENTARY
A&E	SAT	NOV 25 2006	01:20:37pm	4	8	60 AMBIEN CR SLEEP RX (D560)	LL COOL J	VARIETY-MUSICAL
A&E	SAT	NOV 25 2006	01:47:40pm	5	7	60 AMBIEN CR SLEEP RX (D560)	LL COOL J	VARIETY-MUSICAL
A&E	SAT	NOV 25 2006	02:21:58pm	6	8	60 NEULASTA INFECTION RX (D560)	AIRLINE	SLICE-OF-LIFE
A&E	SAT	NOV 25 2006	03:50:01pm	6	9	60 AMBIEN CR SLEEP RX (D560)	AIRLINE	SLICE-OF-LIFE
A&E	SAT	NOV 25 2006	04:21:07pm	6	11	60 NEULASTA INFECTION RX (D560)	AIRLINE	SLICE-OF-LIFE

A&E	SAT	NOV 25 2006	09:23:16pm	4	9	60 NEULASTA INFECTION RX (D560)	COLD CASE FILES	DOCUMENTARY
A&E	SAT	NOV 25 2006	11:24:59pm	6	7	60 CRESTOR CHOLESTEROL RX (D560)	STAR WARS: EMPIRE/DREAMS	DOCUMENTARY
A&E	SAT	NOV 25 2006	01:23:16X	4	9	60 NEULASTA INFECTION RX (D560)	COLD CASE FILES	DOCUMENTARY
A&E	SAT	NOV 25 2006	03:24:59X	6	7	60 CRESTOR CHOLESTEROL RX (D560)	STAR WARS: EMPIRE/DREAMS	DOCUMENTARY
A&E	SUN	NOV 26 2006	07:53:30am	3	7	60 CRESTOR CHOLESTEROL RX (D560)	MAKING/BOBBY	DOCUMENTARY
A&E	SUN	NOV 26 2006	09:56:55am	7	11	60 BONIVA OSTEOPOROSIS RX (D560)	BREAKFAST WITH THE ARTS	VARIETY-GENERAL
A&E	SUN	NOV 26 2006	10:18:16am	2	6	60 LUNESTA SLEEP RX (D560)	U-571	FEATURE FILM
A&E	SUN	NOV 26 2006	11:00:15am	8	8	60 REQUIP RESTLESS LEGS SYNDROM RX (D560)	U-571	FEATURE FILM
A&E	SUN	NOV 26 2006	11:42:57am	7	8	60 AMBIEN CR SLEEP RX (D560)	U-571	FEATURE FILM
A&E	SUN	NOV 26 2006	12:04:27pm	6	8	60 AMBIEN CR SLEEP RX (D560)	U-571	FEATURE FILM
A&E	SUN	NOV 26 2006	01:24:37pm	6	8	60 ACTONEL OSTEOPOROSIS RX (D560)	RIVER WILD	FEATURE FILM
A&E	SUN	NOV 26 2006	02:46:23pm	2	10	60 AMBIEN CR SLEEP RX (D560)	RIVER WILD	FEATURE FILM
A&E	SUN	NOV 26 2006	04:23:34pm	6	9	60 LUNESTA SLEEP RX (D560)	FIND & DESIGN	INSTRCTN/ADVICE
A&E	SUN	NOV 26 2006	04:50:44pm	5	7	60 CRESTOR CHOLESTEROL RX (D560)	MOVE THIS HOUSE	INSTRCTN/ADVICE
A&E	SUN	NOV 26 2006	07:38:10pm	6	8	60 LUNESTA SLEEP RX (D560)	FLIP THIS HOUSE	INSTRCTN/ADVICE
A&E	SUN	NOV 26 2006	08:13:22pm	4	7	60 LUNESTA SLEEP RX (D560)	FLIP THIS HOUSE	INSTRCTN/ADVICE
A&E	SUN	NOV 26 2006	11:42:50pm	3	6	60 NEULASTA INFECTION RX (D560)	INTERVENTION	SLICE-OF-LIFE
A&E	SUN	NOV 26 2006	12:13:22X	4	7	60 LUNESTA SLEEP RX (D560)	FLIP THIS HOUSE	INSTRCTN/ADVICE
A&E	SUN	NOV 26 2006	03:42:50X	3	6	60 NEULASTA INFECTION RX (D560)	INTERVENTION	SLICE-OF-LIFE
A&E	MON	NOV 27 2006	09:34:41am	4	5	60 AMBIEN CR SLEEP RX (D560)	CITY CONFIDENTIAL	DRAMA/ADVNTN
A&E	MON	NOV 27 2006	10:07:24am	1	8	60 LUNESTA SLEEP RX (D560)	AMERICAN JUSTICE	POLICE/SUSPENSE
A&E	MON	NOV 27 2006	10:36:27am	1	8	60 SPIRIVA HANDIHALER RX (D560)	AMERICAN JUSTICE	POLICE/SUSPENSE
A&E	MON	NOV 27 2006	11:09:34am	2	6	60 CYMBALTA RX (D560)	COLD CASE FILES	DOCUMENTARY
A&E	MON	NOV 27 2006	12:03:36pm	5	10	60 AMBIEN CR SLEEP RX (D560)	CROSSING JORDAN	DRAMA/ADVNTN
A&E	MON	NOV 27 2006	01:32:56pm	6	7	60 LUNESTA SLEEP RX (D560)	CSI: MIAMI	POLICE/SUSPENSE
A&E	MON	NOV 27 2006	02:38:37pm	6	9	60 NEXIUM HEARTBURN RX (D560)	24	DRAMA/ADVNTN
A&E	MON	NOV 27 2006	03:34:41pm	4	5	60 AMBIEN CR SLEEP RX (D560)	CITY CONFIDENTIAL	DRAMA/ADVNTN
A&E	MON	NOV 27 2006	04:07:24pm	1	8	60 LUNESTA SLEEP RX (D560)	AMERICAN JUSTICE	POLICE/SUSPENSE
A&E	MON	NOV 27 2006	04:36:27pm	1	8	60 SPIRIVA HANDIHALER RX (D560)	AMERICAN JUSTICE	POLICE/SUSPENSE
A&E	MON	NOV 27 2006	05:09:34pm	2	6	60 CYMBALTA RX (D560)	COLD CASE FILES	DOCUMENTARY
A&E	MON	NOV 27 2006	06:03:36pm	5	10	60 AMBIEN CR SLEEP RX (D560)	CROSSING JORDAN	DRAMA/ADVNTN
A&E	MON	NOV 27 2006	07:32:56pm	6	7	60 LUNESTA SLEEP RX (D560)	CSI: MIAMI	POLICE/SUSPENSE
A&E	MON	NOV 27 2006	08:51:29pm	3	7	60 AMBIEN CR SLEEP RX (D560)	CSI: MIAMI	POLICE/SUSPENSE
A&E	MON	NOV 27 2006	09:28:17pm	5	8	60 VALTREX HERPES RX (D560)	MONSTER'S BALL	FEATURE FILM
A&E	MON	NOV 27 2006	09:59:51pm	7	8	60 VALTREX HERPES RX (D560)	MONSTER'S BALL	FEATURE FILM
A&E	MON	NOV 27 2006	10:09:07pm	1	8	60 LUNESTA SLEEP RX (D560)	MONSTER'S BALL	FEATURE FILM
A&E	MON	NOV 27 2006	10:11:08pm	4	8	30 NASONEX ALLERGY RX (D560)	MONSTER'S BALL	FEATURE FILM
A&E	MON	NOV 27 2006	10:21:45pm	5	8	60 VALTREX HERPES RX (D560)	MONSTER'S BALL	FEATURE FILM
A&E	MON	NOV 27 2006	10:35:27pm	6	7	60 NEXIUM HEARTBURN RX (D560)	MONSTER'S BALL	FEATURE FILM
A&E	MON	NOV 27 2006	10:46:14pm	7	10	30 NASONEX ALLERGY RX (D560)	MONSTER'S BALL	FEATURE FILM
A&E	MON	NOV 27 2006	11:00:04pm	1	6	60 LUNESTA SLEEP RX (D560)	MONSTER'S BALL	FEATURE FILM
A&E	MON	NOV 27 2006	11:01:34pm	3	6	60 VALTREX HERPES RX (D560)	MONSTER'S BALL	FEATURE FILM
A&E	MON	NOV 27 2006	11:18:57pm	8	8	60 ZELNORM IBS RX (D560)	MONSTER'S BALL	FEATURE FILM
A&E	MON	NOV 27 2006	12:51:29X	3	7	60 AMBIEN CR SLEEP RX (D560)	CSI: MIAMI	POLICE/SUSPENSE
A&E	MON	NOV 27 2006	01:28:17X	5	8	60 VALTREX HERPES RX (D560)	MONSTER'S BALL	FEATURE FILM
A&E	MON	NOV 27 2006	01:59:51X	7	8	60 VALTREX HERPES RX (D560)	MONSTER'S BALL	FEATURE FILM
A&E	MON	NOV 27 2006	02:09:07X	1	8	60 LUNESTA SLEEP RX (D560)	MONSTER'S BALL	FEATURE FILM
A&E	MON	NOV 27 2006	02:11:08X	4	8	30 NASONEX ALLERGY RX (D560)	MONSTER'S BALL	FEATURE FILM
A&E	MON	NOV 27 2006	02:21:45X	5	8	60 VALTREX HERPES RX (D560)	MONSTER'S BALL	FEATURE FILM
A&E	MON	NOV 27 2006	02:35:27X	6	7	60 NEXIUM HEARTBURN RX (D560)	MONSTER'S BALL	FEATURE FILM
A&E	MON	NOV 27 2006	02:46:14X	7	11	30 NASONEX ALLERGY RX (D560)	MONSTER'S BALL	FEATURE FILM
A&E	MON	NOV 27 2006	03:00:04X	1	6	60 LUNESTA SLEEP RX (D560)	MONSTER'S BALL	FEATURE FILM
A&E	MON	NOV 27 2006	03:01:34X	3	6	60 VALTREX HERPES RX (D560)	MONSTER'S BALL	FEATURE FILM
A&E	MON	NOV 27 2006	03:18:57X	8	8	60 ZELNORM IBS RX (D560)	MONSTER'S BALL	FEATURE FILM
A&E	TUE	NOV 28 2006	08:26:38am	3	6	60 NEXIUM HEARTBURN RX (D560)	24	DRAMA/ADVNTN
A&E	TUE	NOV 28 2006	09:07:40am	1	5	60 AMBIEN CR SLEEP RX (D560)	CITY CONFIDENTIAL	DRAMA/ADVNTN
A&E	TUE	NOV 28 2006	11:22:02am	6	8	60 CYMBALTA RX (D560)	COLD CASE FILES	DOCUMENTARY
A&E	TUE	NOV 28 2006	11:46:31am	7	9	60 CADUET RX (D560)	COLD CASE FILES	DOCUMENTARY
A&E	TUE	NOV 28 2006	02:26:38pm	4	7	60 NEXIUM HEARTBURN RX (D560)	24	DRAMA/ADVNTN
A&E	TUE	NOV 28 2006	03:07:40pm	1	6	60 AMBIEN CR SLEEP RX (D560)	CITY CONFIDENTIAL	DRAMA/ADVNTN
A&E	TUE	NOV 28 2006	05:22:02pm	6	8	60 CYMBALTA RX (D560)	COLD CASE FILES	DOCUMENTARY
A&E	TUE	NOV 28 2006	05:46:31pm	7	9	60 CADUET RX (D560)	COLD CASE FILES	DOCUMENTARY
A&E	TUE	NOV 28 2006	08:30:03pm	2	6	60 LIPITOR CHOLESTEROL RX (D560)	CSI: MIAMI	POLICE/SUSPENSE
A&E	TUE	NOV 28 2006	09:51:47pm	11	12	60 NEXIUM HEARTBURN RX (D560)	DOG THE BOUNTY HUNTER	SLICE-OF-LIFE
A&E	TUE	NOV 28 2006	10:24:54pm	5	7	60 VALTREX HERPES RX (D560)	DOG THE BOUNTY HUNTER	SLICE-OF-LIFE
A&E	TUE	NOV 28 2006	10:36:02pm	5	8	60 NEXIUM HEARTBURN RX (D560)	DOG THE BOUNTY HUNTER	SLICE-OF-LIFE
A&E	TUE	NOV 28 2006	11:11:49pm	5	6	60 ZELNORM IBS RX (D560)	DOG THE BOUNTY HUNTER	SLICE-OF-LIFE
A&E	TUE	NOV 28 2006	11:22:38pm	3	6	60 ZELNORM IBS RX (D560)	DOG THE BOUNTY HUNTER	SLICE-OF-LIFE
A&E	TUE	NOV 28 2006	11:24:39pm	6	6	60 LUNESTA SLEEP RX (D560)	DOG THE BOUNTY HUNTER	SLICE-OF-LIFE
A&E	TUE	NOV 28 2006	11:35:24pm	2	7	60 VALTREX HERPES RX (D560)	CSI: MIAMI	POLICE/SUSPENSE
A&E	TUE	NOV 28 2006	12:30:03X	6	6	60 LIPITOR CHOLESTEROL RX (D560)	DOG THE BOUNTY HUNTER	SLICE-OF-LIFE
A&E	TUE	NOV 28 2006	01:51:47X	11	12	60 NEXIUM HEARTBURN RX (D560)	DOG THE BOUNTY HUNTER	SLICE-OF-LIFE
A&E	TUE	NOV 28 2006	02:24:54X	5	7	60 VALTREX HERPES RX (D560)	DOG THE BOUNTY HUNTER	SLICE-OF-LIFE
A&E	TUE	NOV 28 2006	02:36:02X	5	8	60 NEXIUM HEARTBURN RX (D560)	DOG THE BOUNTY HUNTER	SLICE-OF-LIFE
A&E	TUE	NOV 28 2006	03:22:38X	3	6	60 ZELNORM IBS RX (D560)	DOG THE BOUNTY HUNTER	SLICE-OF-LIFE
A&E	TUE	NOV 28 2006	03:24:39X	6	6	60 LUNESTA SLEEP RX (D560)	DOG THE BOUNTY HUNTER	SLICE-OF-LIFE
A&E	TUE	NOV 28 2006	03:35:24X	6	7	60 VALTREX HERPES RX (D560)	DOG THE BOUNTY HUNTER	SLICE-OF-LIFE
A&E	WED	NOV 29 2006	09:25:27am	3	8	60 AMBIEN CR SLEEP RX (D560)	CITY CONFIDENTIAL	DRAMA/ADVNTN
A&E	WED	NOV 29 2006	09:33:44am	1	8	60 CADUET RX (D560)	CITY CONFIDENTIAL	DRAMA/ADVNTN
A&E	WED	NOV 29 2006	10:35:13am	3	10	60 CYMBALTA RX (D560)	AMERICAN JUSTICE	POLICE/SUSPENSE
A&E	WED	NOV 29 2006	11:22:44am	8	8	60 CADUET RX (D560)	COLD CASE FILES	DOCUMENTARY
A&E	WED	NOV 29 2006	11:34:16am	3	10	60 SPIRIVA HANDIHALER RX (D560)	COLD CASE FILES	DOCUMENTARY
A&E	WED	NOV 29 2006	01:34:58pm	6	6	60 LUNESTA SLEEP RX (D560)	CSI: MIAMI	POLICE/SUSPENSE
A&E	WED	NOV 29 2006	03:25:27pm	3	7	60 AMBIEN CR SLEEP RX (D560)	CITY CONFIDENTIAL	DRAMA/ADVNTN
A&E	WED	NOV 29 2006	03:33:44pm	1	8	60 CADUET RX (D560)	CITY CONFIDENTIAL	DRAMA/ADVNTN
A&E	WED	NOV 29 2006	04:35:13pm	3	9	60 CYMBALTA RX (D560)	AMERICAN JUSTICE	POLICE/SUSPENSE
A&E	WED	NOV 29 2006	05:22:44pm	7	7	60 CADUET RX (D560)	COLD CASE FILES	DOCUMENTARY
A&E	WED	NOV 29 2006	05:34:16pm	3	10	60 SPIRIVA HANDIHALER RX (D560)	COLD CASE FILES	DOCUMENTARY
A&E	WED	NOV 29 2006	07:34:58pm	6	6	60 LUNESTA SLEEP RX (D560)	CSI: MIAMI	POLICE/SUSPENSE
A&E	WED	NOV 29 2006	08:03:49pm	2	6	60 AMBIEN CR SLEEP RX (D560)	CSI: MIAMI	POLICE/SUSPENSE
A&E	WED	NOV 29 2006	09:40:06pm	9	11	60 ZELNORM IBS RX (D560)	DOG THE BOUNTY HUNTER	SLICE-OF-LIFE
A&E	WED	NOV 29 2006	12:03:49X	2	6	60 AMBIEN CR SLEEP RX (D560)	CSI: MIAMI	POLICE/SUSPENSE
A&E	WED	NOV 29 2006	12:42:17X	7	7	60 ZELNORM IBS RX (D560)	CSI: MIAMI	POLICE/SUSPENSE
A&E	WED	NOV 29 2006	01:40:06X	9	11	60 ZELNORM IBS RX (D560)	DOG THE BOUNTY HUNTER	SLICE-OF-LIFE
A&E	WED	NOV 29 2006	02:39:17X	8	10	60 ZELNORM IBS RX (D560)	CRISS ANGEL MINDFREAK	VARIETY-GENERAL
A&E	THU	NOV 30 2006	08:26:33am	5	8	60 CYMBALTA RX (D560)	24	DRAMA/ADVNTN
A&E	THU	NOV 30 2006	09:20:33am	3	7	60 LUNESTA SLEEP RX (D560)	CITY CONFIDENTIAL	DRAMA/ADVNTN
A&E	THU	NOV 30 2006	09:30:34am	1	7	60 AMBIEN CR SLEEP RX (D560)	CITY CONFIDENTIAL	DRAMA/ADVNTN
A&E	THU	NOV 30 2006	10:23:36am	2	7	60 SPIRIVA HANDIHALER RX (D560)	AMERICAN JUSTICE	POLICE/SUSPENSE
A&E	THU	NOV 30 2006	10:26:06am	7	7	60 LUNESTA SLEEP RX (D560)	AMERICAN JUSTICE	POLICE/SUSPENSE
A&E	THU	NOV 30 2006	01:30:41pm	5	7	60 CIALIS ERECTILE DYSFUNCTION RX (D560)	CSI: MIAMI	POLICE/SUSPENSE
A&E	THU	NOV 30 2006	02:28:33pm	5	8	60 CYMBALTA RX (D560)	24	DRAMA/ADVNTN

A&E	THU	NOV 30 2006	03:20:33pm	3	7	60 LUNESTA SLEEP RX (D560)	CITY CONFIDENTIAL	DRAMA/ADVNTR
A&E	THU	NOV 30 2006	03:30:34pm	1	7	60 AMBIEN CR SLEEP RX (D560)	CITY CONFIDENTIAL	DRAMA/ADVNTR
A&E	THU	NOV 30 2006	04:23:36pm	2	7	60 SPIRIVA HANDIHALER RX (D560)	AMERICAN JUSTICE	POLICE/SUSPENSE
A&E	THU	NOV 30 2006	04:26:07pm	7	7	60 LUNESTA SLEEP RX (D560)	AMERICAN JUSTICE	POLICE/SUSPENSE
A&E	THU	NOV 30 2006	07:30:41pm	5	7	60 CIALIS ERECTILE DYSFUNCTION RX (D560)	CSI: MIAMI	POLICE/SUSPENSE
A&E	THU	NOV 30 2006	08:45:14pm	7	7	60 ZELNORM IBS RX (D560)	CSI: MIAMI	POLICE/SUSPENSE
A&E	THU	NOV 30 2006	08:53:22pm	7	7	60 ENBREL RX (D560)	CSI: MIAMI	POLICE/SUSPENSE
A&E	THU	NOV 30 2006	09:27:02pm	3	8	60 ENBREL RX (D560)	FIRST 48	DOCUMENTARY
A&E	THU	NOV 30 2006	10:39:10pm	10	10	60 ZELNORM IBS RX (D560)	DALLAS SWAT	SLICE-OF-LIFE
A&E	THU	NOV 30 2006	10:51:12pm	4	9	60 NEXIUM HEARTBURN RX (D560)	DALLAS SWAT	SLICE-OF-LIFE
A&E	THU	NOV 30 2006	11:49:43pm	7	7	60 ZELNORM IBS RX (D560)	COLD CASE FILES	DOCUMENTARY
A&E	THU	NOV 30 2006	12:45:14X	7	7	60 ZELNORM IBS RX (D560)	CSI: MIAMI	POLICE/SUSPENSE
A&E	THU	NOV 30 2006	12:53:22X	7	7	60 ENBREL RX (D560)	CSI: MIAMI	POLICE/SUSPENSE
A&E	THU	NOV 30 2006	01:27:02X	3	8	60 ENBREL RX (D560)	FIRST 48	DOCUMENTARY
A&E	THU	NOV 30 2006	02:51:12X	4	9	60 NEXIUM HEARTBURN RX (D560)	DALLAS SWAT	SLICE-OF-LIFE
A&E	THU	NOV 30 2006	03:49:43X	7	8	60 ZELNORM IBS RX (D560)	COLD CASE FILES	DOCUMENTARY

This is **Exhibit D** referred to in the Affidavit of **Kathy Gardner** sworn before me this 4<sup>th</sup> day of June, 2007.

A handwritten signature in black ink, consisting of a stylized 'A' followed by a horizontal line and a small upward curve.

---

A Commissioner, etc.

		Areas >>	Toronto DMA							
		Audiences >>	A18+							
Plans	Vehicle	Name	Vehicle Type	Weight	GRP's	Insertions	Rich%	Freq	Imp(000)	Rich(000)
Plan 1	1	TOTAL			539.4	1527	49.0	11.0	30566	2777
	2	DAYS OF OUR LIVES x WGRZ x ...F... x 13:00:00 x 14	Program	100	0.0	1	0.0	0.0	0	0
	3	1 VS 100 x WGRZ x ...F... x 20:00:00 x 21:00:00	Program	100	0.0	1	0.0	0.0	0	0
	4	CH2 NEWS AT 5:30 x WGRZ x ...W.F... x 17:30:00 x 18:	Program	100	0.1	1	0.1	1.0	7	7
	5	CH2 FIRST AT 5 x WGRZ x ...WTF... x 17:00:00 x 17:30	Program	100	0.2	1	0.3	0.7	13	18
	6	CH2 NEWS AT 5:30 x WGRZ x ...WTF... x 17:30:00 x 18:	Program	100	0.2	1	0.2	1.0	9	9
	7	CH2 FIRST AT 5 x WGRZ x ...WTF... x 17:00:00 x 17:30	Program	100	0.2	1	0.2	1.0	10	10
	8	CH2 NEWS AT 5:30 x WGRZ x ...WTF... x 17:30:00 x 18:	Program	100	0.2	1	0.2	1.0	9	9
	9	CH2 NEWS AT 5:30 x WGRZ x M.WTF... x 17:30:00 x 18:	Program	100	0.1	1	0.0	2.6	3	1
	10	CH2 FIRST AT 5 x WGRZ x MTWTF... x 17:00:00 x 17:30	Program	100	0.2	1	0.2	1.0	13	13
	11	CH2 FIRST AT 5 x WGRZ x MTWTF... x 17:00:00 x 17:30	Program	100	0.2	1	0.2	1.1	11	10
	12	CH2 NEWS x WGRZ x MTWTFSS x 18:00:00 x 18:30:00	Program	100	0.0	1	0.0	1.1	2	2
	13	CH2 NEWS x WGRZ x MTWTFSS x 18:00:00 x 18:30:00	Program	100	0.0	1	0.0	1.0	1	1
	14	CH2 NEWS x WGRZ x MTWTFSS x 18:00:00 x 18:30:00	Program	100	0.2	1	0.2	0.9	10	11
	15	RACHAEL RAY x WGRZ x MTWTFSS x 10:00:00 x 11:00:00	Program	100	0.2	1	0.2	0.9	9	10
	16	DR. PHIL x WGRZ x MTWTFSS x 15:00:00 x 16:00:00	Program	100	0.8	1	0.8	1.0	44	45
	17	CH2 NEWS AT 5:30 x WGRZ x MTWTFSS x 17:30:00 x 18:	Program	100	0.0	1	0.0	1.0	1	1
	18	CH2 FIRST AT 5 x WGRZ x MTWTFSS x 17:00:00 x 17:30	Program	100	0.3	1	0.2	1.4	17	12
	19	7 NEWS AT NOON x WKBW x ...W... x 12:00:00 x 12:30	Program	100	0.1	1	0.1	1.0	6	6
	20	AM. FUNNI. HOME VID. x WKBW x ...W... x 19:00:00 x	Program	100	0.1	1	0.1	1.1	4	3
	21	P.M. BUFFALO x WKBW x M.W...S x 16:00:00 x 17:00:0	Program	100	0.0	1	0.0	1.5	1	0
	22	PAID PROGRAM x WKBW x M.W...S x 25:00:00 x 27:00:0	Program	100	0.0	0	0.0	0.0	0	0
	23	PAID PROGRAM x WKBW x MTW...S x 25:00:00 x 27:00:0	Program	100	0.0	0	0.0	0.0	0	0
	24	7 NEWS AT NOON x WKBW x MTW...S x 12:06:00 x 12:30	Program	100	0.0	1	0.0	1.0	3	2
	25	7 NEWS AT NOON x WKBW x MTWT...S x 12:00:00 x 12:30	Program	100	0.0	1	0.0	1.0	1	1
	26	7 NEWS AT NOON x WKBW x MTWTF.S x 12:00:00 x 12:30	Program	100	0.1	1	0.1	1.0	4	4
	27	7 NEWS AT NOON x WKBW x MTWTF.S x 12:00:00 x 12:30	Program	100	0.1	1	0.1	1.1	6	5
	28	PAID PROGRAM x WKBW x MTWTF.S x 25:00:00 x 27:00:0	Program	100	0.0	0	0.0	0.0	0	0
	29	P.M. BUFFALO x WKBW x MTWTF.S x 16:00:00 x 17:00:0	Program	100	0.1	2	0.1	1.3	5	4
	30	PAID PROGRAM x WKBW x MTWTF.S x 25:00:00 x 27:00:0	Program	100	0.0	0	0.0	0.0	0	0
	31	7 NEWS AT NOON x WKBW x MTWTF.S x 12:00:00 x 12:30	Program	100	0.0	1	0.0	0.0	0	0
	32	7 NEWS AT NOON x WKBW x MTWTF.S x 12:00:00 x 12:30	Program	100	0.0	1	0.0	0.0	0	0
	33	7 NEWS AT NOON x WKBW x MTWTF.S x 12:00:00 x 12:30	Program	100	0.0	1	0.0	1.0	1	1
	34	7 NEWS AT NOON x WKBW x MTWTF.S x 12:00:00 x 12:30	Program	100	0.0	1	0.0	0.0	0	0
	35	PAID PROGRAM x WKBW x MTWTF.S x 25:00:00 x 27:00:0	Program	100	0.0	0	0.0	0.0	0	0
	36	7 NEWS AT NOON x WKBW x MTWTF.S x 12:00:00 x 12:30	Program	100	0.0	1	0.0	1.2	0	0
	37	LIVE W/REGIS/KELLY x WKBW x MTWTF.S x 09:00:00 x 1	Program	100	0.0	1	0.0	0.0	0	0
	38	7 NEWS AT NOON x WKBW x MTWTF.S x 12:00:00 x 12:30	Program	100	0.0	1	0.0	1.0	1	1
	39	PAID PROGRAM x WKBW x MTWTF.S x 25:00:00 x 27:00:0	Program	100	0.0	0	0.0	0.0	0	0
	40	7 NEWS AT NOON x WKBW x MTWTF.S x 12:00:00 x 12:30	Program	100	0.2	1	0.2	1.0	9	9
	41	PAID PROGRAM x WKBW x MTWTF.S x 25:00:00 x 27:00:0	Program	100	0.0	0	0.0	0.0	0	0
	42	P.M. BUFFALO x WKBW x MTWTF.S x 16:00:00 x 17:00:0	Program	100	0.0	1	0.0	1.0	1	1
	43	PAID PROGRAM x WKBW x MTWTF.S x 25:00:00 x 27:00:0	Program	100	0.0	0	0.0	0.0	0	0
	44	PAID PROGRAM x WKBW x MTWTF.S x 25:00:00 x 27:00:0	Program	100	0.0	0	0.0	0.0	0	0
	45	7 NEWS AT NOON x WKBW x MTWTF.S x 12:00:00 x 12:30	Program	100	0.0	1	0.0	0.9	1	2
	46	JUDGE JOE BROWN x WUTV x ...W... x 12:30:00 x 13:0	Program	100	0.5	1	0.4	1.4	28	21
	47	BONES x WUTV x ...W... x 20:00:00 x 21:00:00	Program	100	0.2	1	0.1	1.2	9	7
	48	DIVORCE COURT x WUTV x ...WT... x 12:00:00 x 12:30:	Program	100	0.2	1	0.2	1.0	9	9
	49	TIL DEATH x WUTV x ...WT... x 20:00:00 x 20:30:00	Program	100	0.5	1	0.5	1.0	27	26
	50	DIVORCE COURT x WUTV x ...WTF... x 12:00:00 x 12:30:	Program	100	1.0	1	0.7	1.4	56	40
	51	JUDGE JOE BROWN x WUTV x ...WTF... x 12:30:00 x 13:0	Program	100	0.9	1	0.7	1.4	51	38
	52	THAT 70'S SHOW x WUTV x ...WTF... x 23:30:00 x 24:00	Program	100	0.3	1	0.2	1.3	14	11
	53	COPS x WUTV x ...WTFSS x 20:00:00 x 20:30:00	Program	100	0.2	1	0.1	1.3	10	8
	54	A&E, ...SS 07:00-08:00	Daypart	100	5.6	17	1.6	3.4	315	92
	55	A&E, MTWTFSS 08:00-12:00	Daypart	100	38.2	139	7.9	4.8	2165	447
	56	A&E, MTWTFSS 12:00-18:00	Daypart	100	64.6	175	15.0	4.3	3659	847
	57	A&E, MTWTFSS 18:00-24:00	Daypart	100	149.3	166	27.2	5.5	8459	1543
	58	A&E, MTWTFSS 24:00-28:00	Daypart	100	48.0	118	9.6	5.0	2720	542
	59	CNN, MTWTFSS 06:00-12:00	Daypart	100	42.8	199	6.5	6.6	2428	368
	60	CNN, MTWTFSS 12:00-18:00	Daypart	100	53.0	239	9.0	5.9	3004	510
	61	CNN, MTWTFSS 18:00-24:00	Daypart	100	100.4	247	17.8	5.6	5691	1009
	62	CNN, MTWTFSS 24:00-29:00	Daypart	100	30.3	174	6.0	5.1	1718	339
	63	WKBW, MTWTF... 29:30-30:00	Daypart	100	0.0	9	0.0	1.1	2	2

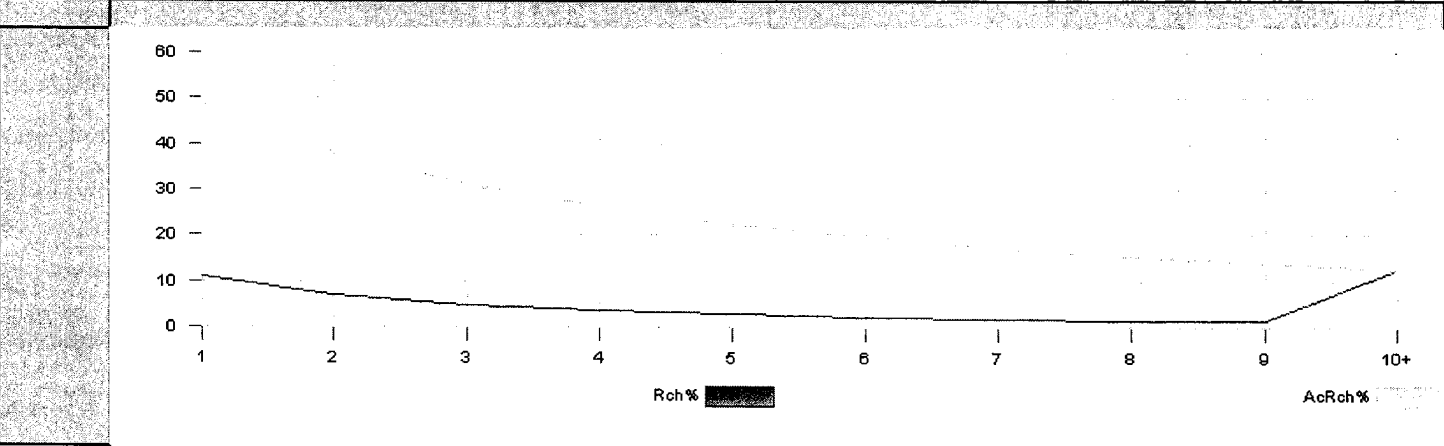
Source: BBM-NMR Meter data



[FREQUENCY] (A18+|Toronto DMA|Plan 1)

Contact >>	1	2	3	4	5	6	7	8	9	10+
Stats	1.00	1.00	1.00	1.00	1.00	1.00	1.00	1.00	1.00	1.00
Rch%	11	7	4.9	3.7	2.9	2.3	1.9	1.6	1.3	12.4
AcRch%	49	38	31	26.2	22.5	19.6	17.3	15.4	13.8	12.4





[TECHNICAL CARD]

BBM Analytics - Sofres Audiencia de Medios, S.A.  
Planning calculate by multiple support

Reference Audience: A18+  
Panel Type: Mean Day 11/15/2006

Dates 11/1/2006 to 11/30/2006

	Toronto DMA	
	Univ(000)	Sample
A18+	5667	1172

This is **Exhibit E** referred to in the Affidavit of **Kathy Gardner** sworn before me this 4<sup>th</sup> day of June, 2007.

A handwritten signature in black ink, consisting of a series of loops and a sharp peak, positioned above a horizontal line.

A Commissioner, etc.



---

**Library  
of Parliament**



**Bibliothèque  
du Parlement**

---

**Parliamentary Information and Research Service**

Staff of the Parliamentary Research Branch (PRB) of the Library of Parliament work exclusively for Parliament conducting research and providing analysis and policy advice to Members of the Senate and House of Commons and to parliamentary committees on a non-partisan and confidential basis. The documents on this site were originally prepared for general distribution to Canadian Parliamentarians to provide background and analysis of issues that may arise in the course of their Parliamentary duties. They are made available here as a service to the public. These studies are not official Parliamentary or Canadian government documents. No legal or other professional advice is offered by the authors or the Parliamentary Research Branch in presenting its publications or in maintaining links to other Internet sites.

---

**PRB 99-25E**

Print Copy

**CULTURAL EXEMPTIONS IN CANADA'S  
MAJOR INTERNATIONAL TRADE AGREEMENTS  
AND INVESTMENT RELATIONSHIPS**

**Prepared by:  
René Lemieux, Joseph Jackson  
Political and Social Affairs Division  
12 October 1999**

---

**CULTURAL EXEMPTIONS IN CANADA'S  
MAJOR INTERNATIONAL TRADE AGREEMENTS  
AND INVESTMENT RELATIONSHIPS**

Canada has joined the global economy by signing a number of international trade agreements. These agreements include certain cultural provisions allowing Canada to continue to support its domestic cultural industries. For example, the cultural industries were exempted from the provisions of the Canada-United States Free Trade Agreement (FTA). A similar exemption was later incorporated into the North American Free Trade Agreement (NAFTA). This exemption is limited, however, in that if one of the parties uses it to establish measures that would otherwise have been inconsistent with the

In October 1998, senior OECD officials decided to terminate the MAI negotiation process without an agreement. For the Government of Canada, the cessation of the MAI negotiations has brought clarity and closure to the debate. As a Department of Foreign Affairs and International Trade statement explains: "Canada's participation in the negotiations was constructive ... Since the outset, we have maintained our bottom-lines to fully safeguard our freedom of action in key areas, including health care, social programs, culture, labour, environment, programs for Aboriginal Peoples and programs for minorities." (7) Moreover, given that trade and investment are "twin engines for job creation, prosperity and economic growth," the federal government now feels that future MAI negotiations should be conducted via the World Trade Organisation (WTO).

---

(1) The United States would first have to demonstrate that, were it not for the exemption, a new Canadian measure would be in violation of the FTA. The subsequent United States response would be limited to measures of equivalent commercial effect.

(2) Examples are the removal of the American-owned Country Music Television channel from Canadian cable services by the Canadian Radio-television and Telecommunications Commission (CRTC) and the CRTC licensing of Canadian direct broadcasting satellites.

(3) The four measures are: Canada's Tariff Code 9958, which prohibits the importation of split run magazines; the 80% excise tax on advertising in split-run magazines (Part V.1 of the *Excise Tax Act*); the postal subsidy (publications assistance program), which allows certain Canadian periodicals to reach their subscribers at lower costs; and the commercial publications mail rates (differential between domestic and foreign commercial publications rates).

(4) Panel and Appellate Body findings in short: Tariff Code 9958 violates GATT Article XI and is not justified as an exception under GATT Article XX; the 80% excise tax is inconsistent with GATT Article III:2; the postal subsidy is in violation of GATT Article III:4; and the commercial publications mail rates ("funded" postal rates) do not constitute subsidies under GATT Article III:8(b) and violate GATT Article III:4.

(5) The original purpose of the MAI was to: (1) provide a broad multilateral framework for international investment with high standards for the liberalisation of investment regimes and investment protection and with effective dispute settlement procedures; and (2) be a free-standing international treaty open to all OECD members and the European Communities, and to accession by non-OECD member countries, which were to be consulted as the negotiations progressed.

(6) "Notes for an address by the Honourable Sergio Marchi Minister for International Trade to the Standing Committee on Foreign Affairs and International Trade, The Multilateral Agreement on Investment," Ottawa, Ontario, 4 November 1997.  
[www.dfait-maeci.gc.ca/english/news/statements/97\\_state/97\\_048e.htm](http://www.dfait-maeci.gc.ca/english/news/statements/97_state/97_048e.htm).

(7) "Multilateral Agreement on Investment (MAI)," Department of Foreign Affairs and International Trade, Ottawa, 1998.  
[www.dfait-maeci.gc.ca/english/trade/backgr-e.htm](http://www.dfait-maeci.gc.ca/english/trade/backgr-e.htm).

1. The first part of the document is a list of the names of the members of the committee.

2. The second part of the document is a list of the names of the members of the committee.

3. The third part of the document is a list of the names of the members of the committee.

4. The fourth part of the document is a list of the names of the members of the committee.

5. The fifth part of the document is a list of the names of the members of the committee.